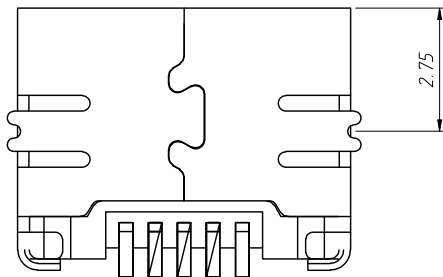
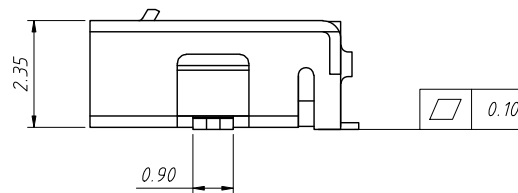
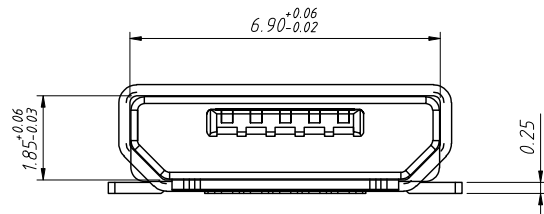


RECOMMENDED PCB LAYOUT

Material:
 Rubber core:LCP
 Shell: C2680/SPCC
 Terminal:C2680
 Salt spray requirements:24H

Electrical:
 Rated current:2A
 Rated voltage:5V
 Dielectric Withstanding Voltage:500V AC for 1 min.
 Contact Resistance:30mΩ Max.
 Insulation Resistance:100MΩ Min.

Mechanical properties:
 Insertion force: 5~20N
 Pullout force: 5~20N
 Life test: 5000cycles
 Thrust: 50N min
 Peel strength: 150N min
 Working temperature: - 20°C ~ 85°C



Order Information:

L-KLS1-4241-B-R

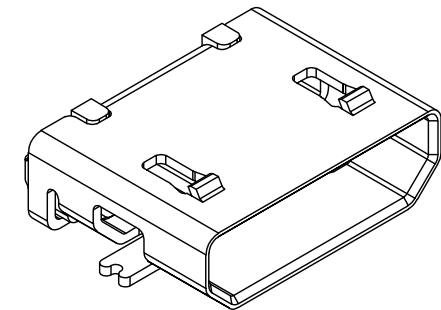
L: RoHS

Micro USB

Color:B=Black

Packing:

R-Reel packing



GENERAL TOLERANCE	PROJECTION		Description:
X. ±0.50	UNITS	mm	CONN RCPT 5POS MICRO USB SMD
.X ±0.25	SCALE	1:1	
.XX ±0.10	Draw by:	Jenny	
ANGLE TOLERANCE	Check by:		KLS P/N: L-KLS1-4241-B-R
X. ±5°	Date	2022-12-15	NingBo KLS ELECTRONIC CO.,L TD.
.X ±3°	SHEET	1 OF 1	
.XX ±2°			