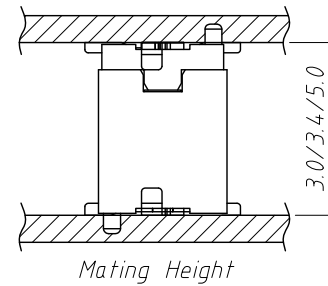
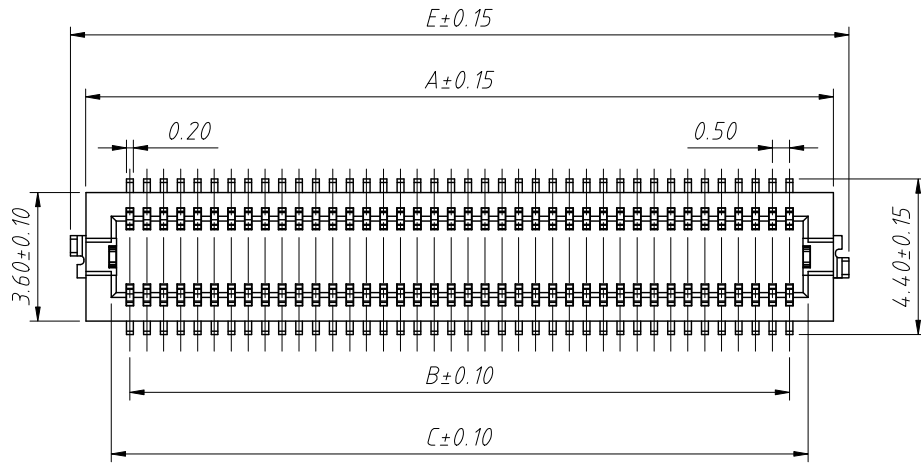
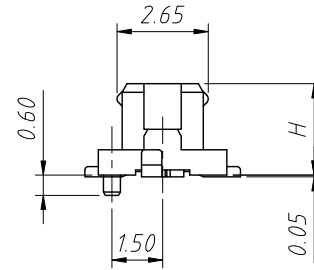
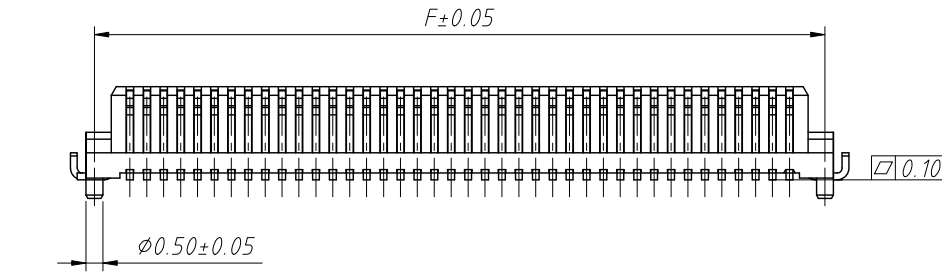
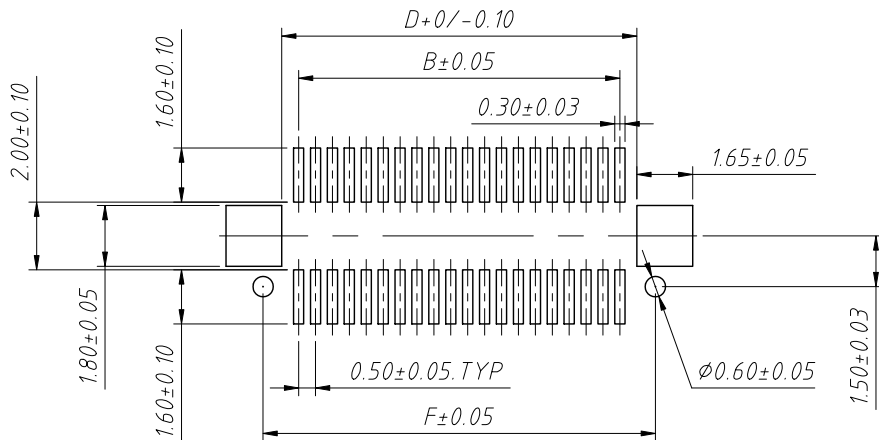


1 RoHS Compliance



Pins	Dimensions(mm)					
	A	B	C	D	E	E
10	4.70	2.00	3.10	3.82	5.50	4.10
20	7.20	4.50	5.60	6.32	8.00	6.60
30	9.70	7.00	8.10	7.82	10.50	9.10
36	11.20	8.50	9.60	10.32	12.00	10.60
40	12.20	9.50	10.60	11.32	13.00	11.60
50	14.70	12.00	13.10	13.82	15.50	14.10
60	17.20	14.50	15.60	16.32	18.00	16.60
68	19.20	16.50	17.60	18.32	20.00	18.60
70	19.70	17.00	18.10	18.82	20.50	19.10
80	22.20	19.50	20.60	21.32	23.00	21.60



Recommended PCB Layout (Top View)

Order Information:

L-KLS1-B0605-270 M XXP-T3R

- L: RoHS
- Board To Board
- Pitch-0.50mm
- Height-2.70mm
- Type:M-Male
- XX-No. Of Contact
- Installation mode:
- T=SMD Without Post, T3=SMD With Post
- Packing:R=Reel T=Tube
- D-With Locating Plate

1.Electrical:

- 1.1.Current Rating:0.3A Max
- 1.2.Contact Resistance:50mΩ Max(Initial), 70mΩ Max(After) .
- 1.3.Dieletric Withstanding Voltage:250V AC 1 Minute.
- 1.4.Insulation Resistance 100MΩ Min.At 500 VDC.

2.Physical:

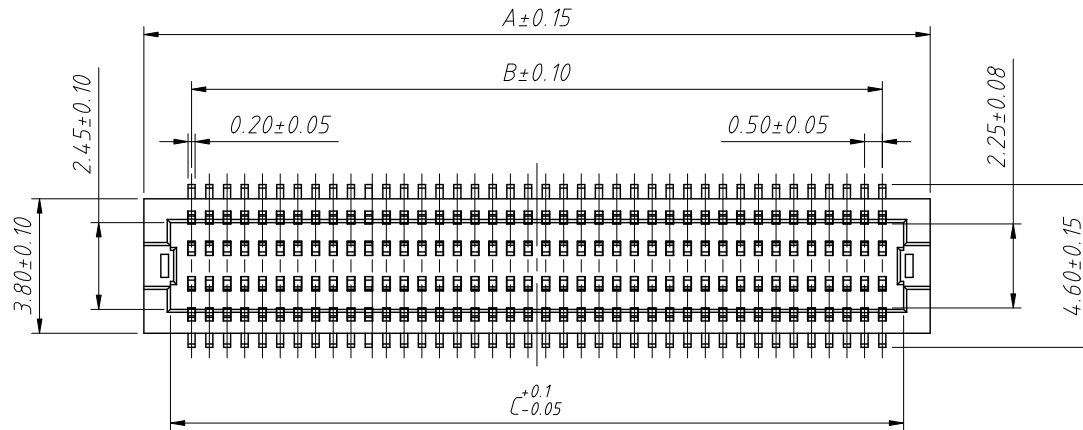
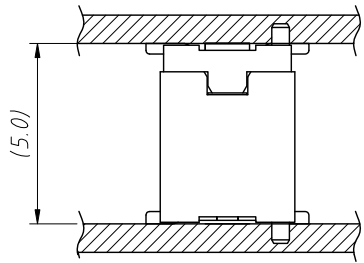
- 2.1.Housing:thermoplastic,UL 94 V-0 Rated,In White Color.
- 2.2.Contact:Copper Alloy.
- 3.2.Operating Temperature:-24 °C to +85 °C

ANGLE TOLERANCE	PROJECTION	Description:
±3°		0.5mm Board To Board Plug
GENERAL TOLERANCE	UNITS	mm
x.x ±0.30	SHEET SIZE	A4
x.xx ±0.20	Draw:	Daniel 2020-11-11
x.xxx ±0.10	Check:	Daniel 2020-11-11

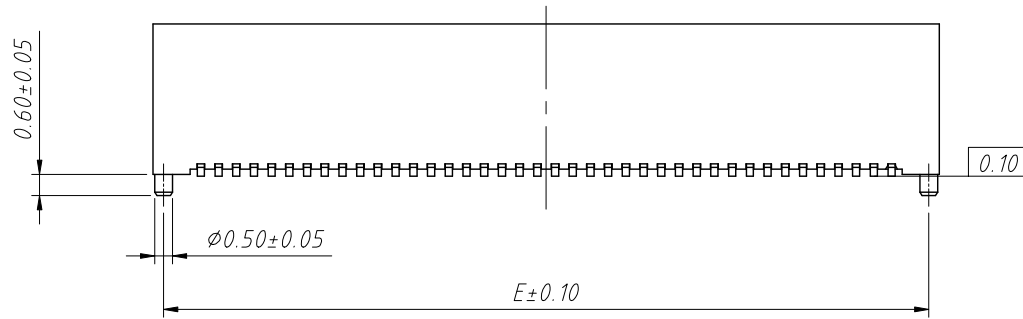
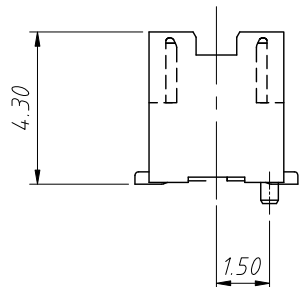


NingBo KLS ELECTRONIC CO.,L TD.

RoHS Compliance

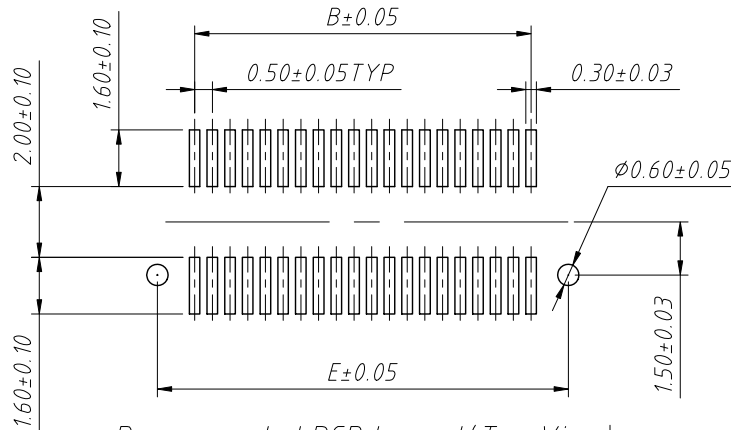


Pins	Dimensions(mm)				
	A	B	C	D	E
10	4.70	2.00	3.20	3.30	4.10
20	7.20	4.50	5.70	5.80	6.60
30	9.70	7.00	8.20	8.30	9.10
36	11.20	8.50	9.70	9.80	10.60
40	12.20	9.50	10.70	10.80	11.60
50	14.70	12.00	13.20	13.30	14.10
60	17.20	14.50	15.70	15.80	16.60
68	19.20	16.50	17.70	17.80	18.60
70	19.70	17.00	18.20	18.30	19.10
80	22.20	19.50	20.70	20.80	21.60



Order Information:
L-KLS1-B0605-430 F XXP-T3R

L: RoHS
 Board To Board
 Pitch-0.50mm
 Height-4.30mm
 TypeF-Female
 XX-No. Of Contact
 Installation mode:
 T=SMD Without Post, T3=SMD With Post
 Packing:R=Reel T=Tube



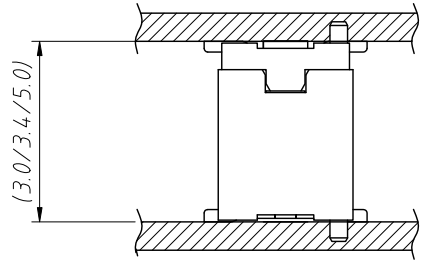
Recommended PCB Layout (Top View)

- 1.Electrical
- 1.1.Current Rating:0.3A Max.
 - 1.2.Contact Resistance:50mΩ Max(Initial), 70mΩ Max(After) .
 - 1.3.Dielectric Withstanding Voltage:250V AC 1 Minute.
 - 1.4.Insulation Resistance 100MΩ Min.At 500 VDC.
- 2.Physical:
- 2.1.Housing:Thermoplastic,UL 94V-0 rated,In White Color.
 - 2.2.Contact:Copper Alloy.
 - 3.2.Operating Temperature:-25°C to +85°C.

ANGLE TOLERANCE	PROJECTION	Description:
±3°		0.5mm Board To Board Socket
GENERAL TOLERANCE	UNITS	mm
x.x ±0.30	SHEET SIZE	A4
x.xx ±0.20	Draw:	Daniel 2020-11-11
x.xxx ±0.10	Check:	Daniel 2020-11-11

NingBo KLS ELECTRONIC CO.,L TD.

1
RoHS Compliance



Mating Height	Plug (H.)	Socket (H.)
3.0	2.05	2.10
3.4	2.20	2.30
5.0	2.70	4.30

Mating Height Dimension

P/N Plug	P/N Socket	Mating Height	Notes
B0605-205MXXP-T3R-D	B0605-210FXXP-T3R-D	3.0	With Post and With Locating Plate
B0605-205MXXP-T3R	B0605-210FXXP-T3R		With Post
B0605-205MXXP-TR-D	B0605-210FXXP-TR-D		Without Post and With Locating Plate
B0605-205MXXP-TR	B0605-210FXXP-TR		Without Post
B0605-220MXXP-T3R	B0605-230FXXP-T3R	3.4	With Post
B0605-270MXXP-T3R-D	B0605-430FXXP-T3R-D	5.0	With Post and With Locating Plate
B0605-270MXXP-TR-D	B0605-430FXXP-TR-D		Without Post and With Locating Plate
B0605-270MXXP-T3R	B0605-430FXXP-T3R		With Post

ANGLE TOLERANCE	PROJECTION	Description:	0.5mm Board To Board (Plug Socket)	
±3°				
GENERAL TOLERANCE	UNITS	mm	KLS P/N:	L-KLS1-B0605
x.x ±0.30	SHEET SIZE	A4		
x.xx ±0.20	Draw:	Daniel	2020-11-11	NingBo KLS ELECTRONIC CO.,L TD.
x.xxx ±0.10	Check:	Daniel	2020-11-11	