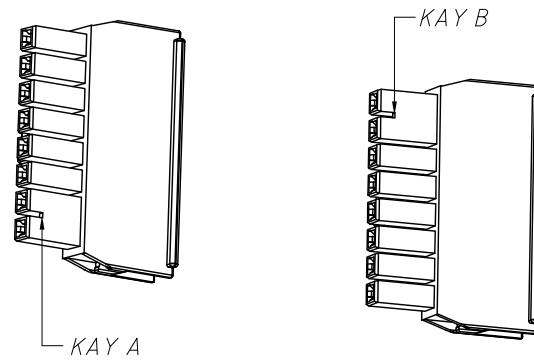
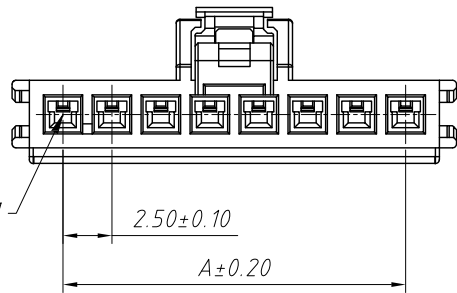


1 RoHS Compliance



Material:
Housing:PA4T+30%GF,UL94V-0

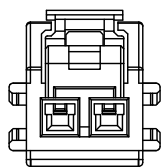
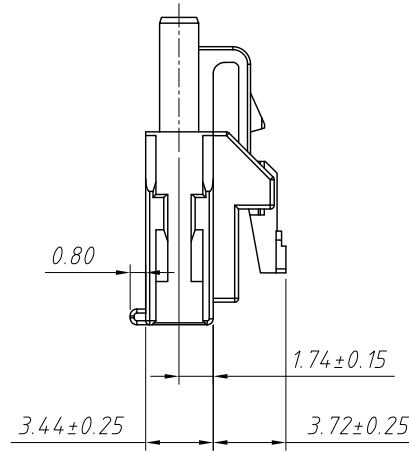
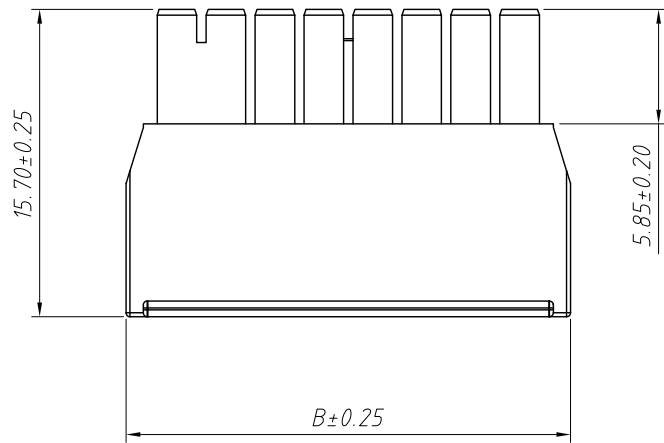
Electrical Characteristics:
Rated Current:3.0AMP
Voltage rating:250V AC,DC
Temperature range:-40°C ~ + 105°C
Insulator Resistance:1000MΩ Min
Withstanding Voltage:1000V AC/minute
Contact Resistance:20mΩ Max

Pin	Dimensions(mm)	
	A	B
02	2.50	7.70
03	5.00	10.20
04	7.50	12.70
05	10.00	15.20
06	12.50	17.70
07	15.00	20.20
08	17.50	22.70

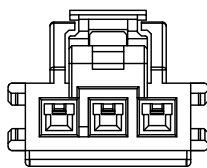
Order Information:

L-KLS1-2.50D-1×XX-H-B

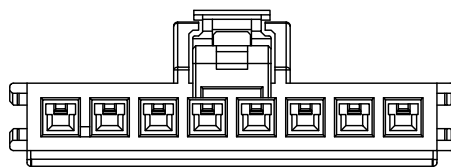
L: RoHS
Pitch:2.50mm
1-Single layer
XX-No. of 02~08 pins
Type:
T-Terminal H-Hosing
S / SA-Straight male pin
R-Right angle male pin
RM-Horizontal SMT Pin
Color:A-KEY A ,Black
B-KEY B ,Natural



02P



03P



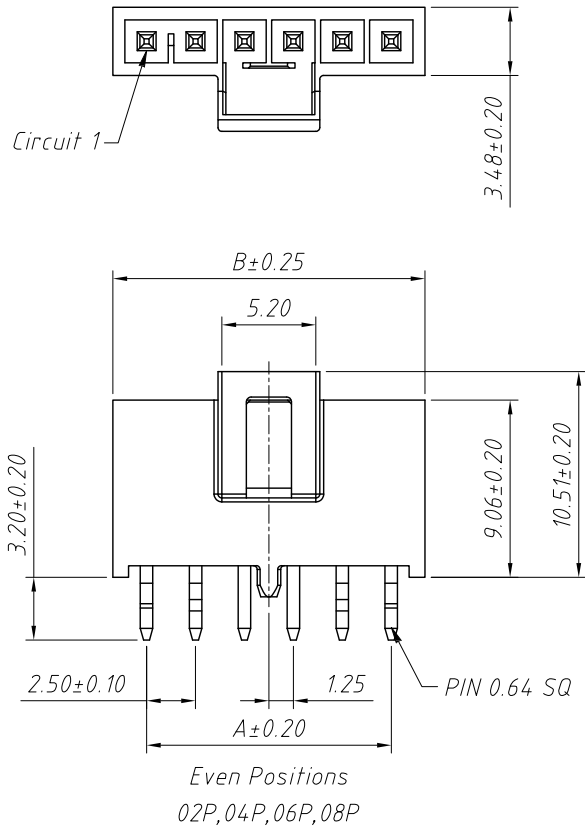
04P~08P

ANGLE TOLERANCE	PROJECTION	Description:	
±3°		2.50mm Pitch Nano-Fit Wire To Board Connector	
GENERAL TOLERANCE	UNITS	mm	KLS P/N:
x.x ±0.30	SHEET SIZE	A4	L-KLS1-2.50D-1×XX-H-B
x.xx ±0.20	Draw:	Daniel	2021-01-11
x.xxx ±0.10	Check:	Daniel	2021-01-11

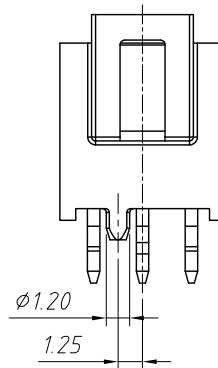


NingBo KLS ELECTRONIC CO.,LTD.

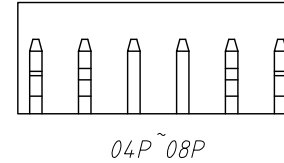
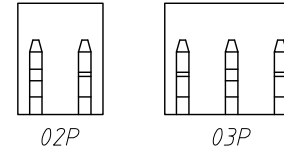
1 RoHS Compliance



Pin	Dimensions(mm)			
	A	B	R	L
02	2.50	5.94	P1	P2
03	5.00	8.44	P1.P3	P2
04	7.50	10.94	P1.P4	P2.P3
05	10.00	13.44	P1.P5	P2.P4
06	12.50	15.94	P1.P6	P2.P5
07	15.00	18.44	P1.P7	P2.P6
08	17.50	20.94	P1.P8	P2.P7

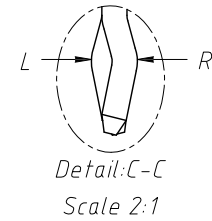


Odd Positions
03P,05P,07P



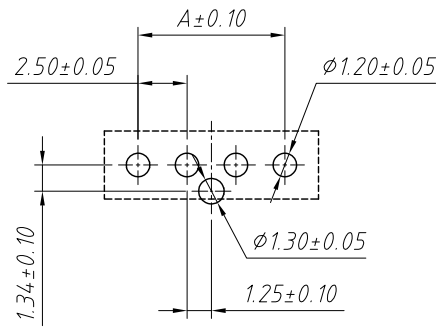
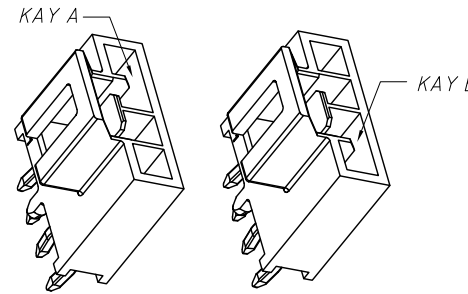
Material:
Housing:LCP,UL94V-0
Contact:Brass
Finish:Tin over Nickel

Electrical Characteristics:
Rated Current:6.5AMP
Voltage rating:250V AC,DC
Temperature range:-40°C ~ + 105°C
Insulator Resistance:1000M Ω Min
Withstanding Voltage:1500V AC/minute
Contact Resistance:10m Ω Max

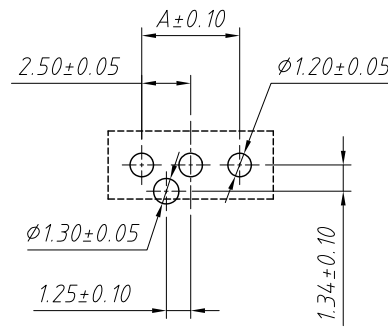


Order Information:
L-KLS1-2.50D-1xXX-S-B

L: RoHS
Pitch:2.50mm
1-Single layer
XX-No. of 02~08 pins
Type:
T-Terminal H-Hosing
S / SA-Straight male pin
R-Right angle male pin
RM-Horizontal SMT Pin
Color:A-KEY A ,Black
B-KEY B ,Natural



Even Positions
02P,04P,06P,08P



Odd Positions
03P,05P,07P

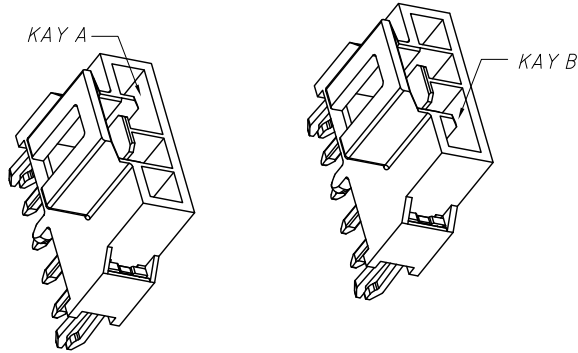
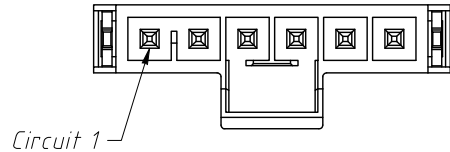
PCB LAYOUT

ANGLE TOLERANCE	PROJECTION	Description:	2.50mm Pitch Nano-Fit Wire To Board Connector
$\pm 3^\circ$			
GENERAL TOLERANCE	UNITS	mm	KLS P/N:
x.x ± 0.30	SHEET SIZE	A4	L-KLS1-2.50D-1xXX-S-B
x.xx ± 0.20	Draw:	Daniel	2021-01-11
x.xxx ± 0.10	Check:	Daniel	2021-01-11



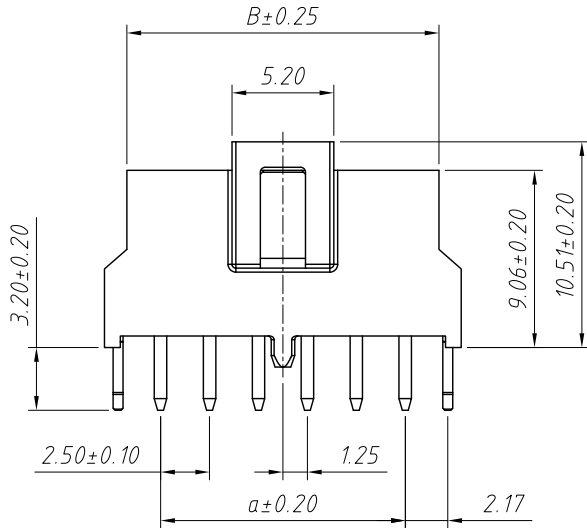
NingBo KLS ELECTRONIC CO.,LTD.

1 RoHS Compliance

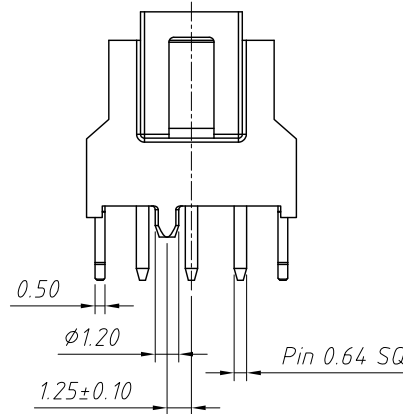


Material:
Housing:LCP,UL 94V-0
Contact:Brass
Finish:Tin over Nickel

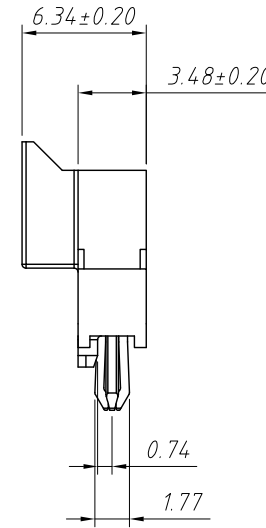
Electrical Characteristics:
Rated Current:6.5AMP
Voltage rating:250V AC,DC
Temperature range:-40°C ~ + 105°C
Insulator Resistance:1000MΩ Min
Withstanding Voltage:1500V AC/minute
Contact Resistance:10mΩ Max



Even Positions
02P,04P,06P,08P



Odd Positions
03P,05P,07P



Order Information:
L-KLS1-2.50D-1xXX-SA-B

L: RoHS

Pitch:2.50mm

1-Single layer

XX-No.of 02~08 pins

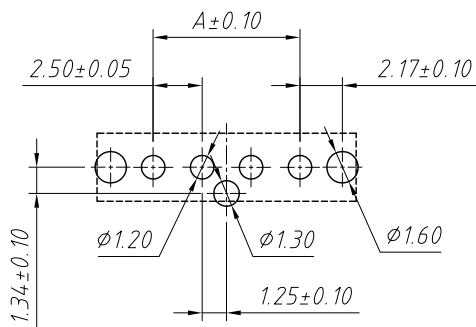
Type:

- T-Terminal
- H-Hosing
- S / SA-Straight male pin
- R-Right angle male pin
- RM-Horizontal SMT Pin

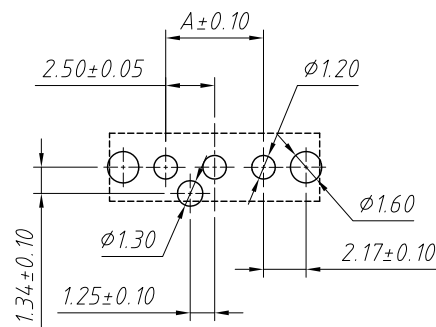
Color:A-KEY A ,Black

B-KEY B ,Natural

Pin	Dimensions(mm)	
	A	B
02	2.50	5.94
03	5.00	8.44
04	7.50	10.94
05	10.00	13.44
06	12.50	15.94
07	15.00	18.44
08	17.50	20.94



Even Positions
02P,04P,06P,08P

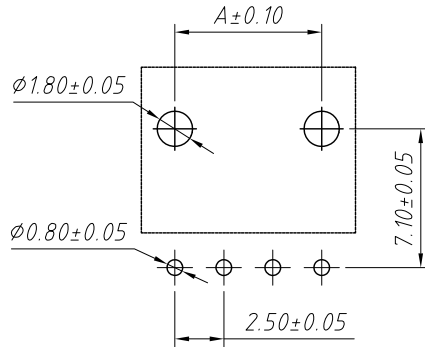
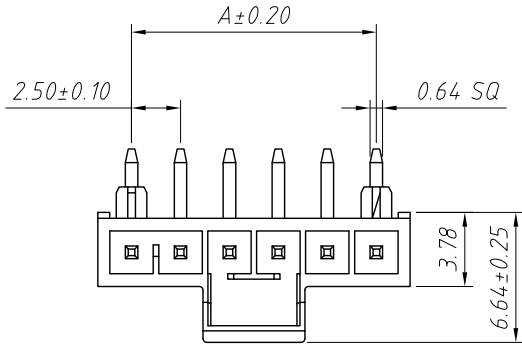


Odd Positions
03P,05P,07P

PCB LAYOUT

ANGLE TOLERANCE	PROJECTION	Description:	
$\pm 3^\circ$			2.50mm Pitch Nano-Fit Wire To Board Connector
GENERAL TOLERANCE	UNITS	mm	KLS P/N: L-KLS1-2.50D-1xXX-SA-B
x.x ± 0.30	SHEET SIZE	A4	NingBo KLS ELECTRONIC CO.,L TD.
x.xx ± 0.20	Draw:	Daniel 2021-01-11	
x.xxx ± 0.10	Check:	Daniel 2021-01-11	

1 RoHS Compliance

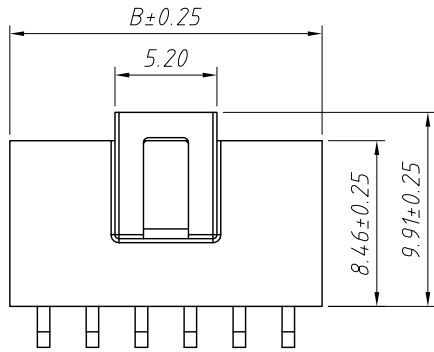


PCB LAYOUT

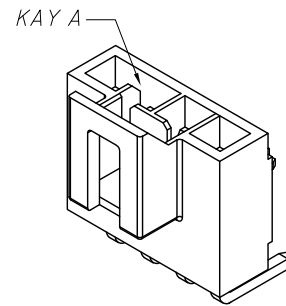
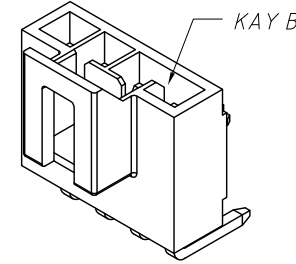
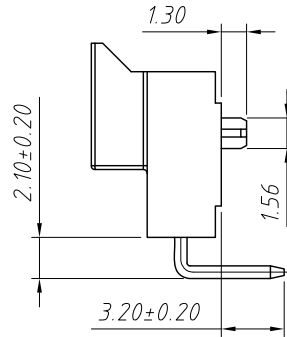
Pin	Dimensions(mm)	
	A	B
02	2.50	5.95
03	5.00	8.45
04	7.50	10.95
05	10.00	13.45
06	12.50	15.95
07	15.00	18.45
08	17.50	20.95

Material:
 Housing:LCP,UL94V-0
 Contact:Brass
 Finish:Tin over Nickel

Electrical Characteristics:
 Rated Current:6.5AMP
 Voltage rating:250V AC,DC
 Temperature range:-40°C ~ + 105°C
 Insulator Resistance:1000MΩ Min
 Withstanding Voltage:1500V AC/minute
 Contact Resistance:10mΩ Max

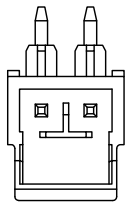


06P~08P

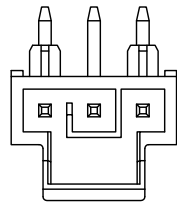


Order Information:
 L-KLS1-2.50D-1×XX-R-B

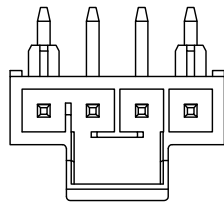
L: RoHS
 Pitch:2.50mm
 1-Single layer
 XX-No. of 02~08 pins
 Type: _____
 T-Terminal H-Hosing
 S / SA-Straight male pin
 R-Right angle male pin
 RM-Horizontal SMT Pin
 Color:A-KEY A ,Black
 B-KEY B ,Natural



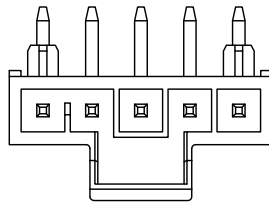
02P



03P



04P



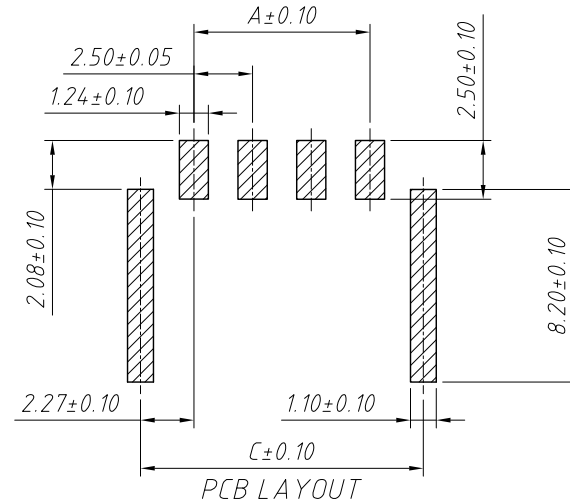
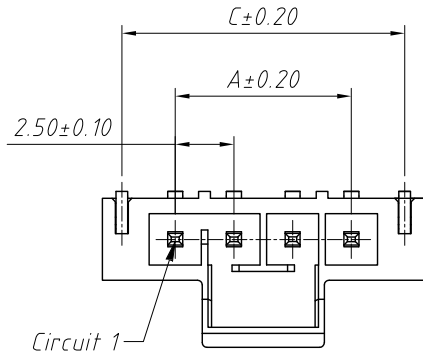
05P

ANGLE TOLERANCE	PROJECTION	Description:
±3°		2.50mm Pitch Nano-Fit Wire To Board Connector
GENERAL TOLERANCE	UNITS	mm
x.x ±0.30	SHEET SIZE	A4
x.xx ±0.20	Draw:	Daniel 2021-01-11
x.xxx ±0.10	Check:	Daniel 2021-01-11



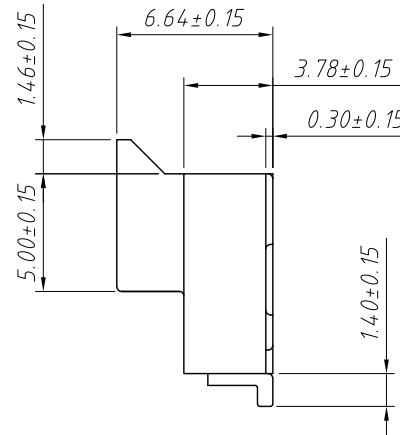
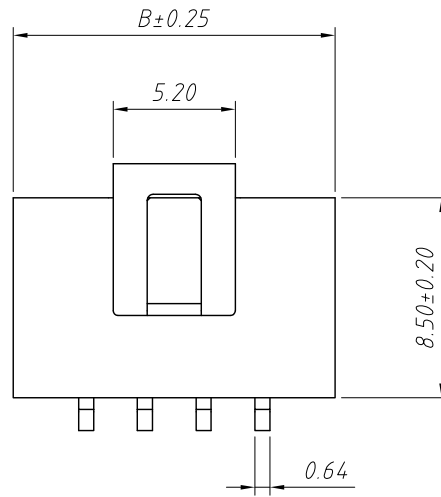
NingBo KLS ELECTRONIC CO.,L.TD.

1 RoHS Compliance



Material:
 Housing:LCP,UL94V-0
 Contact:Brass
 Finish:Tin over Nickel

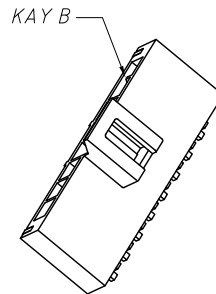
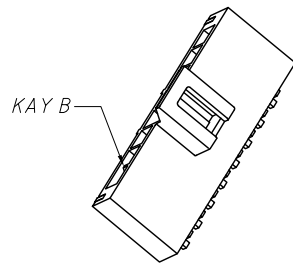
Electrical Characteristics:
 Rated Current:6.5AMP
 Voltage rating:250V AC,DC
 Temperature range:-40°C ~ + 105°C
 Insulator Resistance:1000MΩ Min
 Withstanding Voltage:1500V AC/minute
 Contact Resistance:10mΩ Max



Pin	Dimensions(mm)		
	A	B	C
02	2.50	8.74	7.04
03	5.00	11.24	9.54
04	7.50	13.74	12.04
05	10.00	16.24	14.54
06	12.50	18.74	17.04
07	15.00	21.24	19.54
08	17.50	23.74	22.04

Order Information:
 L-KLS1-2.50D-1×XX-RM-B

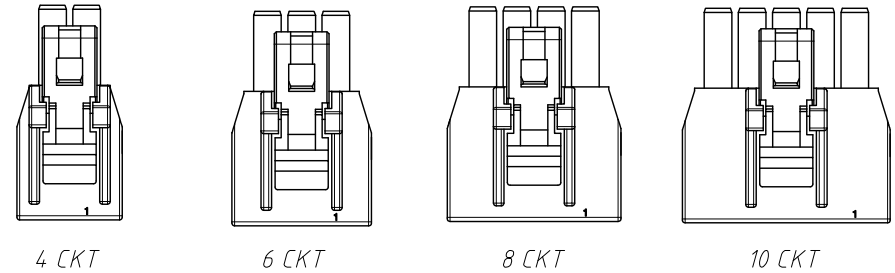
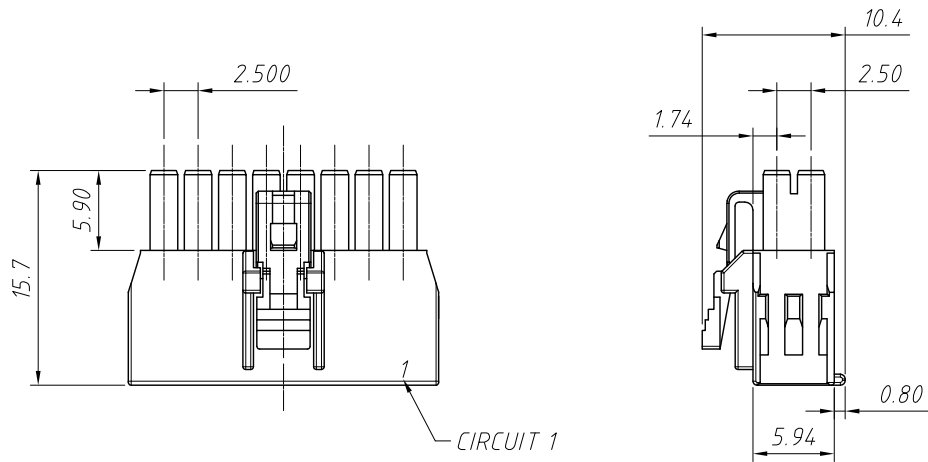
L: RoHS
 Pitch:2.50mm
 1-Single layer
 XX-No. of 02~08 pins
 Type:
 T-Terminal H-Hosing
 S / SA-Straight male pin
 R-Right angle male pin
 RM-Horizontal SMT Pin
 Color:A-KEY A ,Black
 B-KEY B ,Natural



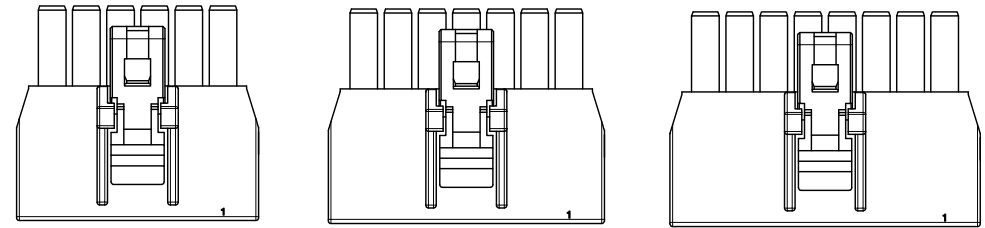
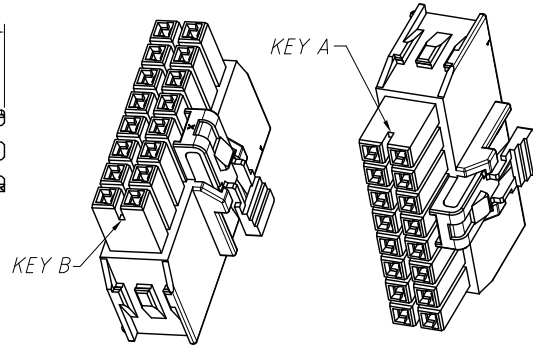
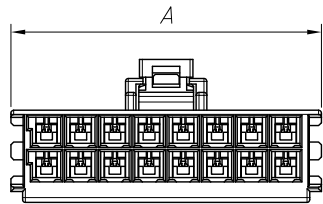
ANGLE TOLERANCE	PROJECTION	Description:	2.50mm Pitch Nano-Fit Wire To Board Connector
±3°			
GENERAL TOLERANCE	UNITS	mm	KLS P/N:
x.x ±0.30	SHEET SIZE	A4	L-KLS1-2.50D-1×XX-RM-B
x.xx ±0.20	Draw:	Daniel	2021-01-11
x.xxx ±0.10	Check:	Daniel	2021-01-11



NingBo KLS ELECTRONIC CO.,L TD.



4 CKT 6 CKT 8 CKT 10 CKT



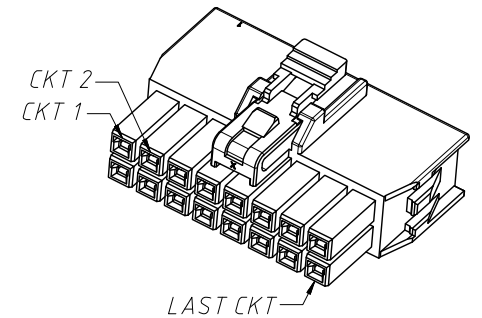
12 CKT 14 CKT 16 CKT

Material:

Housing: Nylon 66 or 4T+30%GF UL 94V-0

Specifications:

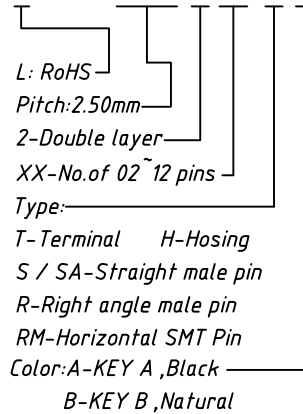
1. Current Rating: 3A AC/DC Max
2. Voltage Rating: 250V AC, DC
3. Contact Resistance: 30mΩ Max
4. Insulation Resistance: 1000MΩ Min
5. Withstanding Voltage: 1500V AC/minute
6. Temperature Range: -40°C ~ +105°C



PART No	DIM A	CKT SIZE	COLOR
2.50D-2X02-H-A	7.70	4	BLACK (KEY A)
2.50D-2X03-H-A	10.20	6	
2.50D-2X04-H-A	12.70	8	
2.50D-2X05-H-A	15.20	10	
2.50D-2X06-H-A	17.70	12	
2.50D-2X07-H-A	20.20	14	
2.50D-2X08-H-A	22.70	16	
2.50D-2X12-H-A	32.70	24	
2.50D-2X02-H-B	7.70	4	NATURAL (KEY B)
2.50D-2X03-H-B	10.20	6	
2.50D-2X04-H-B	12.70	8	
2.50D-2X05-H-B	15.20	10	
2.50D-2X06-H-B	17.70	12	
2.50D-2X07-H-B	20.20	14	
2.50D-2X08-H-B	22.70	16	
2.50D-2X12-H-B	32.70	24	

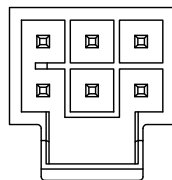
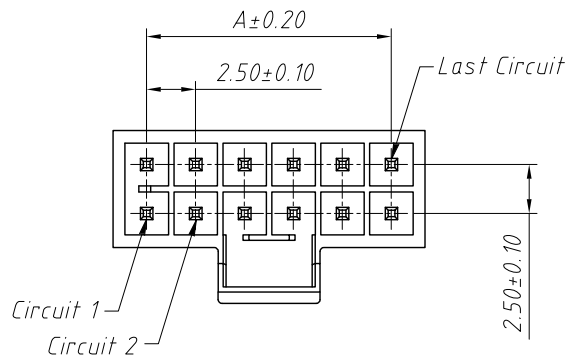
Order Information:

L-KLS1-2.50D-2×XX-H-B



GENERAL TOLERANCE	PROJECTION		Description:
.X ±0.50	UNITS	mm	2.50mm Crimping Double Row Housing
.X ±0.25	SCALE	1:1	
.XX ±0.10	Draw by:	Jenny	
ANGLE TOLERANCE	Check by:		KLS P/N: L-KLS1-2.50D-2×XX-H-B
.X ±5°	Date	2018-03-01	NingBo KLS ELECTRONIC CO.,L TD.
.X ±3°	SHEET	1 OF 1	
.XX ±2°			

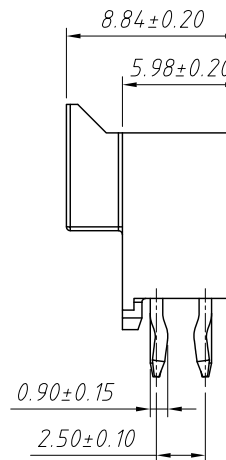
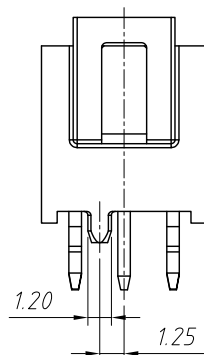
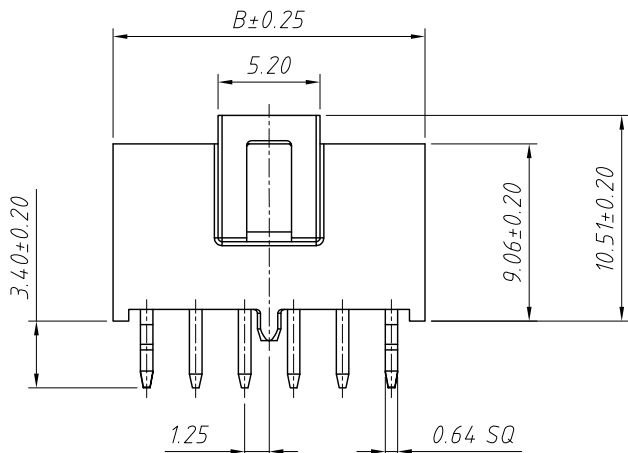
RoHS Compliance



Pin	Dimensions(mm)	
	A	B
02	2.50	5.94
03	5.00	8.44
04	7.50	10.94
05	10.00	13.44
06	12.50	15.94
07	15.00	18.44
08	17.50	20.94

Material:
Housing: LCP, UL 94V-0
Contact: Brass
Finish: Tin over Nickel

Electrical Characteristics:
Rated Current: 6.5AMP
Voltage rating: 250V AC, DC
Temperature range: -40°C ~ +105°C
Insulator Resistance: 1000MΩ Min
Withstanding Voltage: 1500V AC/minute
Contact Resistance: 10mΩ Max

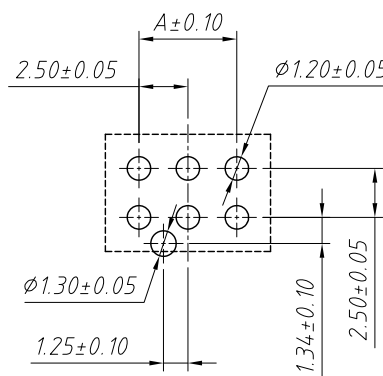
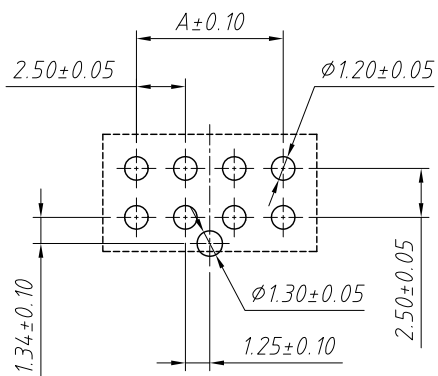


Even Positions
2×02P, 2×04P, 2×06P, 2×08P

Odd Positions
2×03P, 2×05P, 2×07P

Order Information:
L-KLS1-2.50D-2×XX-S-B

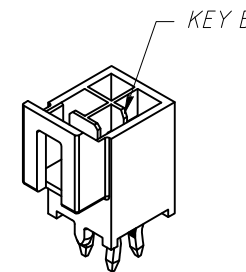
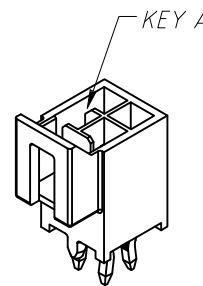
L: RoHS
Pitch: 2.50mm
2-Double layer
XX-No. of 02~08 pins
Type:
T-Terminal H-Housing
S / SA-Straight male pin
R-Right angle male pin
RM-Horizontal SMT Pin
Color: A-KEY A, Black
B-KEY B, Natural



Even Positions
2×02P, 2×04P, 2×06P, 2×08P

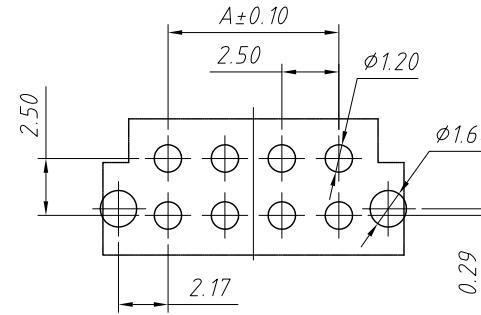
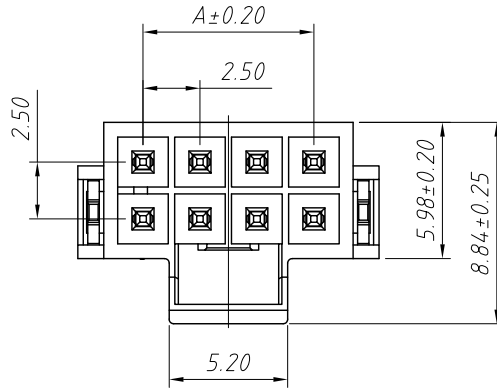
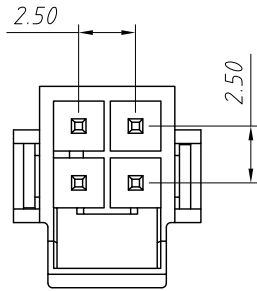
Odd Positions
2×03P, 2×05P, 2×07P

PCB LAYOUT



ANGLE TOLERANCE	PROJECTION	Description:	2.50mm Pitch Nano-Fit Wire To Board Connector	
±3°				
GENERAL TOLERANCE	UNITS	mm	KLS P/N:	L-KLS1-2.50D-2×XX-S-B
x.x ±0.30	SHEET SIZE	A4		
x.xx ±0.20	Draw:	Daniel	2021-01-11	NingBo KLS ELECTRONIC CO.,L TD.
x.xxx ±0.10	Check:	Daniel	2021-01-11	

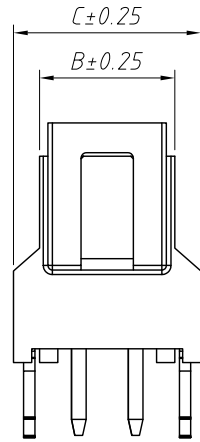
RoHS Compliance



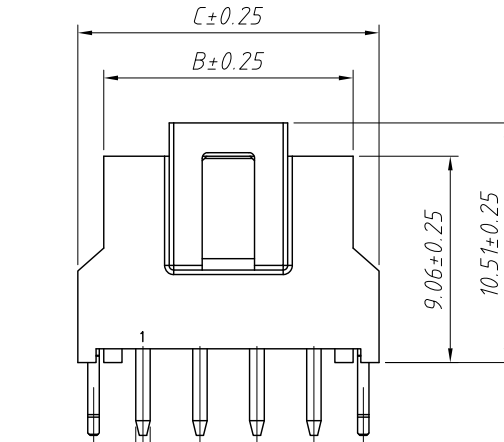
PCB LAYOUT

Material:
 Housing: LCP, UL94V-0
 Contact: Brass
 Finish: Tin over Nickel

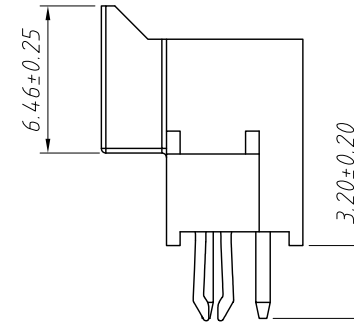
Electrical Characteristics:
 Rated Current: 6.5AMP
 Voltage rating: 250V AC, DC
 Temperature range: -40°C ~ +105°C
 Insulator Resistance: 1000MΩ Min
 Withstanding Voltage: 1500V AC/minute
 Contact Resistance: 10mΩ Max



2x02P

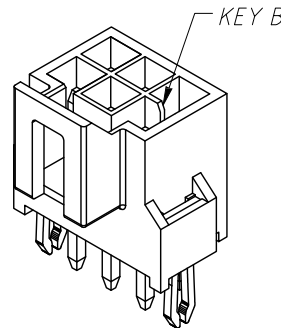
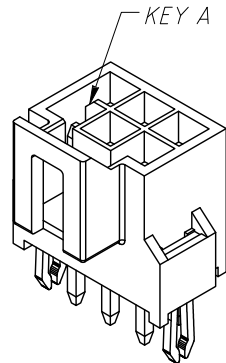


0.64 SQ
 2x03P ~ 2x08P



Order Information:
 L-KLS1-2.50D-2×XX-SA-B

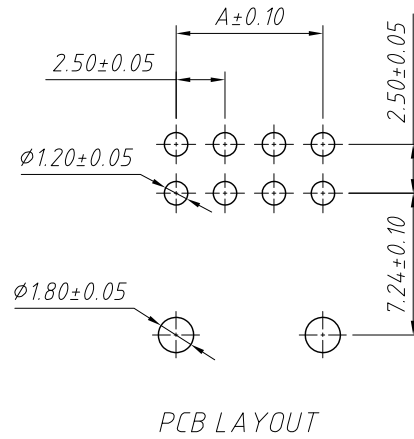
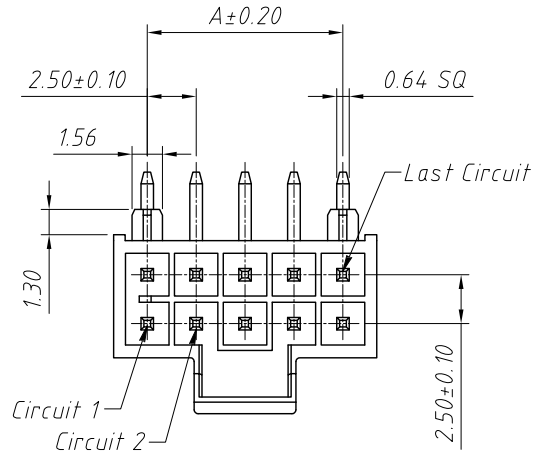
L: RoHS
 Pitch: 2.50mm
 2-Double layer
 XX-No. of 02 ~ 08 pins
 Type: _____
 T-Terminal H-Hosing
 S / SA-Straight male pin
 R-Right angle male pin
 RM-Horizontal SMT Pin
 Color: A-KEY A, Black
 B-KEY B, Natural



Pin	Dimensions(mm)		
	A	B	C
02	2.50	5.95	8.22
03	5.00	8.45	10.72
04	7.50	10.95	13.22
05	10.00	13.45	15.72
06	12.50	18.22	15.96
07	15.00	20.72	18.46
08	17.50	23.22	20.94

ANGLE TOLERANCE	PROJECTION	Description:	2.50mm Pitch Nano-Fit Wire To Board Connector
±3°			
GENERAL TOLERANCE	UNITS	mm	KLS P/N: L-KLS1-2.50D-2×XX-SA-B
x.x ±0.30	SHEET SIZE	A4	NingBo KLS ELECTRONIC CO.,LTD.
x.xx ±0.20	Draw:	Daniel	
x.xxx ±0.10	Check:	Daniel	

1 RoHS Compliance



Pin	Dimensions(mm)	
	A	B
02	2.50	5.94
03	5.00	8.44
04	7.50	10.94
05	10.00	13.44
06	12.50	15.94
07	15.00	18.44
08	17.50	20.94

Material:
Housing:LCP,UL94V-0
Contact:Brass
Finish:Tin over Nickel

Electrical Characteristics:
Rated Current:6.5AMP
Voltage rating:250V AC,DC
Temperature range:-40°C ~ + 105°C
Insulator Resistance:1000MΩ Min
Withstanding Voltage:1500V AC/minute
Contact Resistance:10mΩ Max

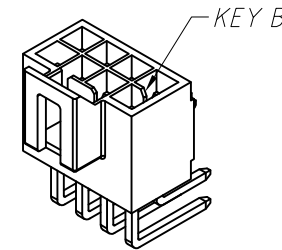
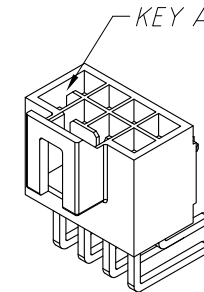
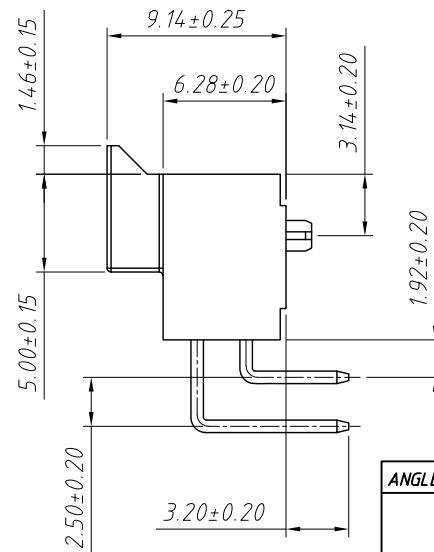
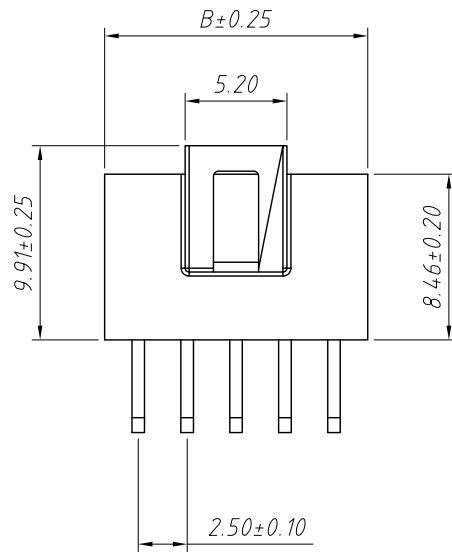
D

E

F

G

H



Order Information:
L-KLS1-2.50D-2×XX-R-B

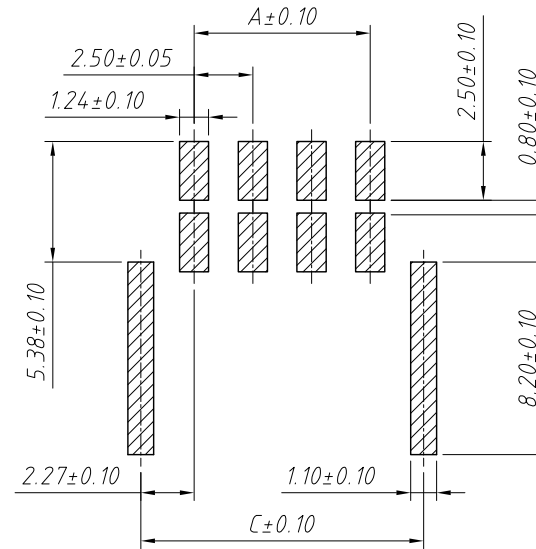
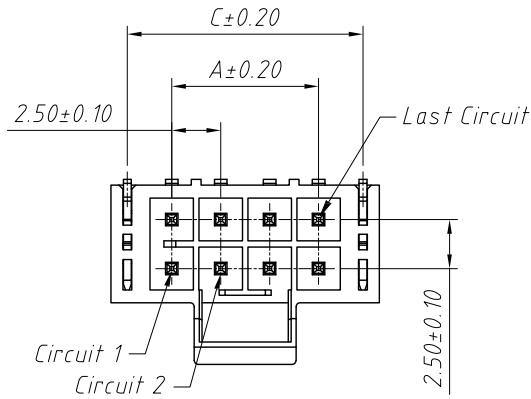
L: RoHS
Pitch:2.50mm
2-Double layer
XX-No. of 02~08 pins
Type:
T-Terminal H-Hosing
S / SA-Straight male pin
R-Right angle male pin
RM-Horizontal SMT Pin
Color:A-KEY A ,Black
B-KEY B ,Natural

ANGLE TOLERANCE	PROJECTION	Description:
±3°		2.50mm Pitch Nano-Fit Wire To Board Connector
GENERAL TOLERANCE	UNITS	mm
x.x ±0.30	SHEET SIZE	A4
x.xx ±0.20	Draw:	Daniel 2021-01-11
x.xxx ±0.10	Check:	Daniel 2021-01-11

KLS P/N: L-KLS1-2.50D-2×XX-R-B

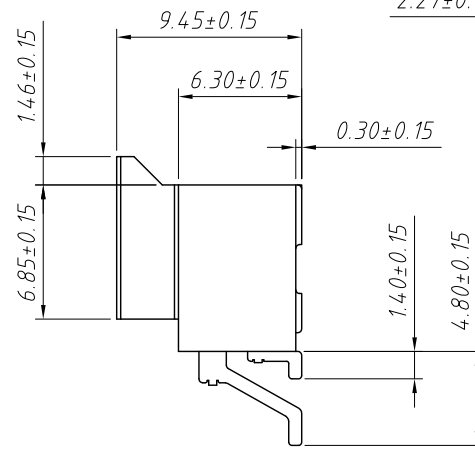
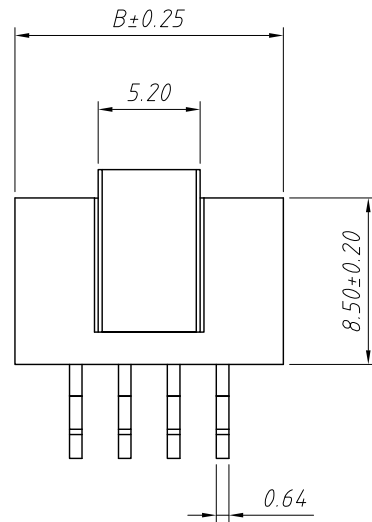
NingBo KLS ELECTRONIC CO.,L TD.

1 RoHS Compliance



Material:
 Housing:LCP,UL94V-0
 Contact:Brass
 Finish:Tin over Nickel

Electrical Characteristics:
 Rated Current:6.5AMP
 Voltage rating:250V AC,DC
 Temperature range:-40°C ~ + 105°C
 Insulator Resistance:1000MΩ Min
 Withstanding Voltage:1500V AC/minute
 Contact Resistance:10mΩ Max

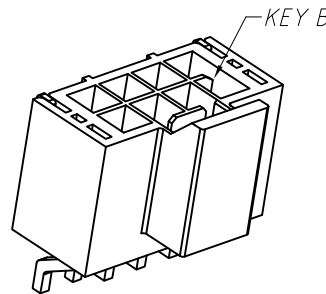
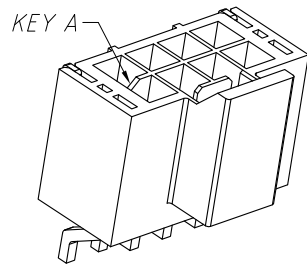


PCB LAYOUT

Order Information:
 L-KLS1-2.50D-2×XX-RM-B

L: RoHS
 Pitch:2.50mm
 2-Double layer
 XX-No.of 02 ~ 08 pins
 Type:
 T-Terminal H-Hosing
 S / SA-Straight male pin
 R-Right angle male pin
 RM-Horizontal SMT Pin
 Color:A-KEY A ,Black
 B-KEY B ,Natural

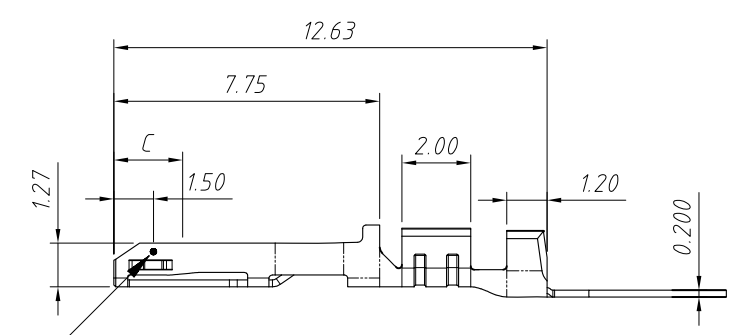
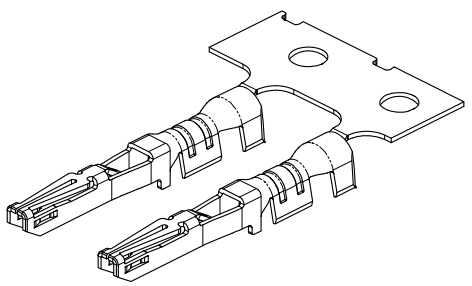
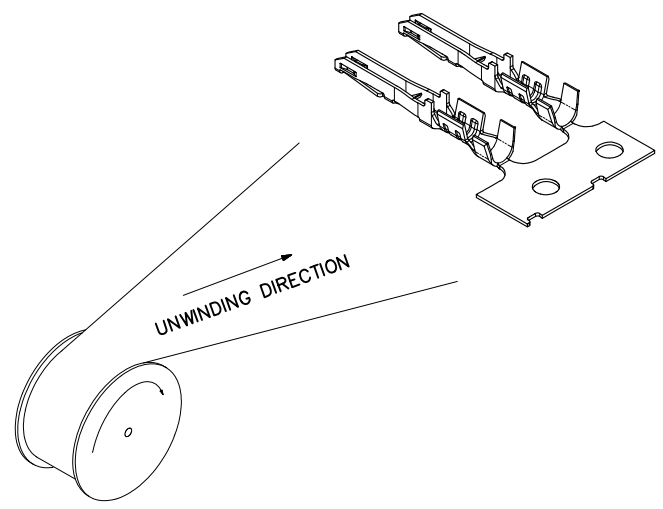
Pin	Dimensions(mm)		
	A	B	C
02	2.50	8.74	7.04
03	5.00	11.24	9.54
04	7.50	13.74	12.04
05	10.00	16.24	14.54
06	12.50	18.74	17.04
07	15.00	21.24	19.54
08	17.50	23.74	22.04



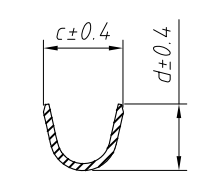
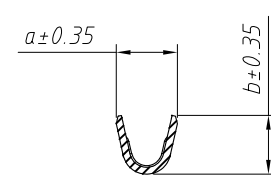
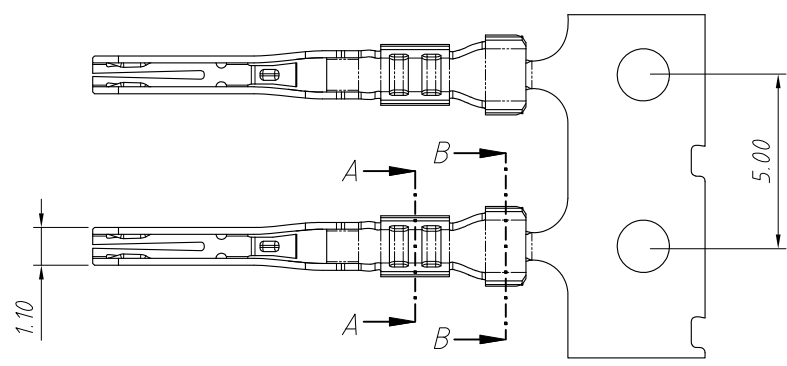
ANGLE TOLERANCE	PROJECTION	Description:	2.50mm Pitch Nano-Fit Wire To Board Connector
±3°			
GENERAL TOLERANCE	UNITS	mm	KLS P/N:
x.x ±0.30	SHEET SIZE	A4	L-KLS1-2.50D-2×XX-RM-B
x.xx ±0.20	Draw:	Daniel	2021-01-11
x.xxx ±0.10	Check:	Daniel	2021-01-11



NingBo KLS ELECTRONIC CO.,LTD.




Test point



Material:
Terminal: Copper Alloy
C: Contact area

- Specifications:
1. Current Rating: 3A AC/DC
 2. Voltage Rating: 250V AC, DC
 3. Contact Resistance: 30mΩ Max
 4. Insulation Resistance: 1000MΩ Min
 5. Withstanding Voltage: 1500V AC/minute
 6. Temperature Range: -40°C ~ +105°C

Part No.	Wire range	Dim.a	Dim.b	Dim.c	Dim.d
2.50D-T1	#20 ~ #26	1.39	1.45	2.12	2.0
2.50D-T2	#20 ~ #22	1.8	1.85	2.33	1.94

GENERAL TOLERANCE	PROJECTION	Symbol	Description:
X. ±0.50	UNITS	mm	2.50mm Crimping Terminal
.X ±0.25	SCALE	1:1	
.XX ±0.10	Draw by:	Jenny	
ANGLE TOLERANCE	Check by:		KLS P/N: L-KLS1-2.50D-T
X. ±5°	Date	2018-03-01	 NingBo KLS ELECTRONIC CO.,L TD.
.X ±3°	SHEET	1 OF 1	
.XX ±2°			