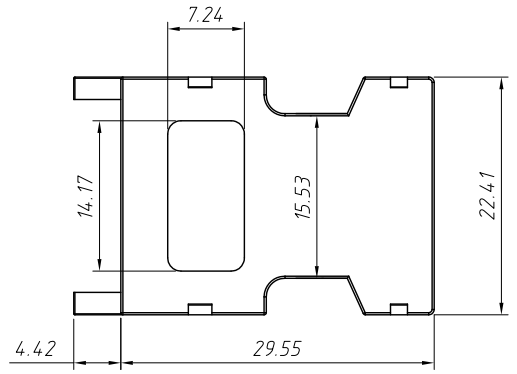
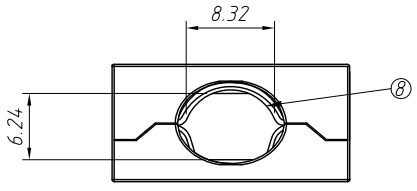
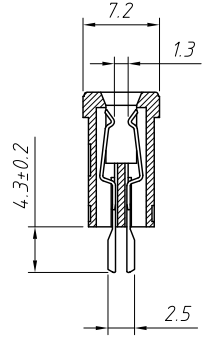
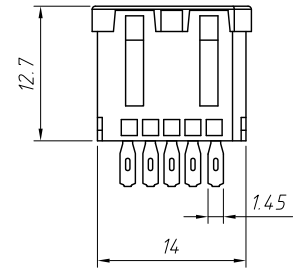
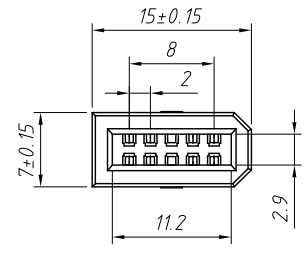
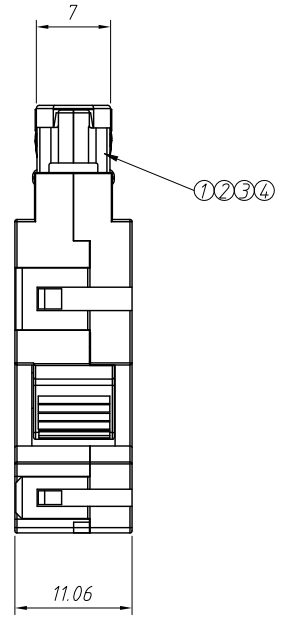
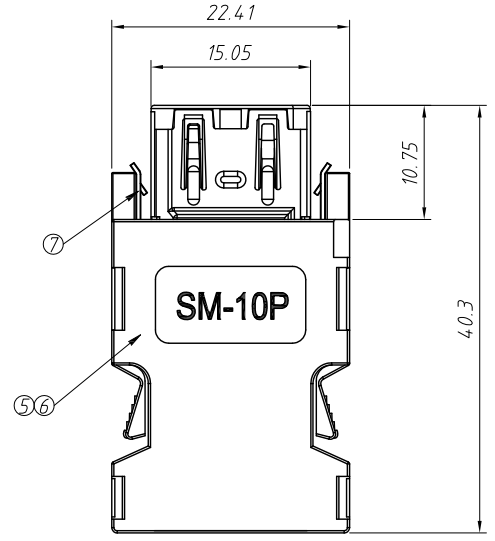
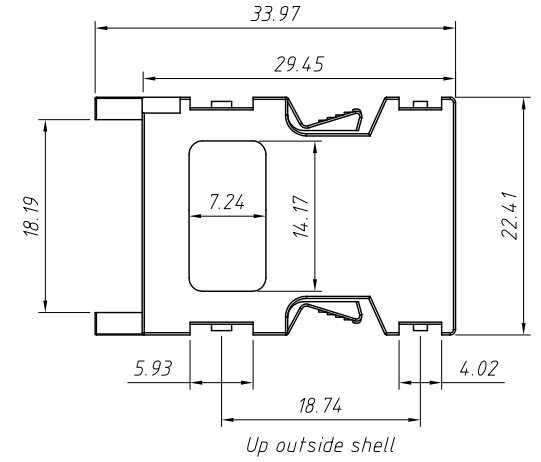


1 RoHS Compliance



Bottom iron shell



Up outside shell

Materials:

1. Plastic body: PBT, UL94-V0
2. Terminal: C5191-EH
3. Up iron shell: C2680-H
4. Bottom iron shell: C2680-H
5. Up outside shell: PBT
6. Bottom outside shell: PBT
7. Clips: SPCC
8. Lock: S301

Electrical:

- Current Rating: 1.0 A
- Contact resistance: 20mΩ MAX
- With standing Voltage: 500 VRMS for 1 minute
- Insulation resistance: 1000MΩ Min
- Temperature Rating: -40°C to +105°C

Contact Material : Phosphor Bronze

Contact Plating : Au Over Ni

Insulator Material : Polyester (UL94v-0)

Standard : PBT

Order Information:

L-KLS1-1394-10PM

L: RoHS

SCSI Connector

No. of 10 Pins

Type:

F-Female M-Male

ANGLE TOLERANCE	PROJECTION	Description:
±3°		IEEE 1394 Servo Connector, 10P Male
GENERAL TOLERANCE	UNITS	mm
x.x ±0.30	SHEET SIZE	A4
x.xx ±0.20	Draw:	Daniel 2021-10-11
x.xxx ±0.10	Check:	Daniel 2021-10-11

NingBo KLS ELECTRONIC CO.,L TD.