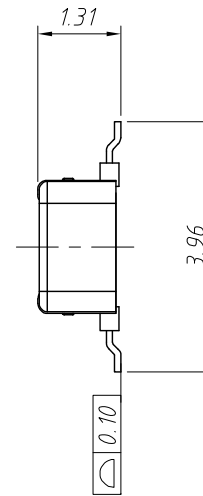
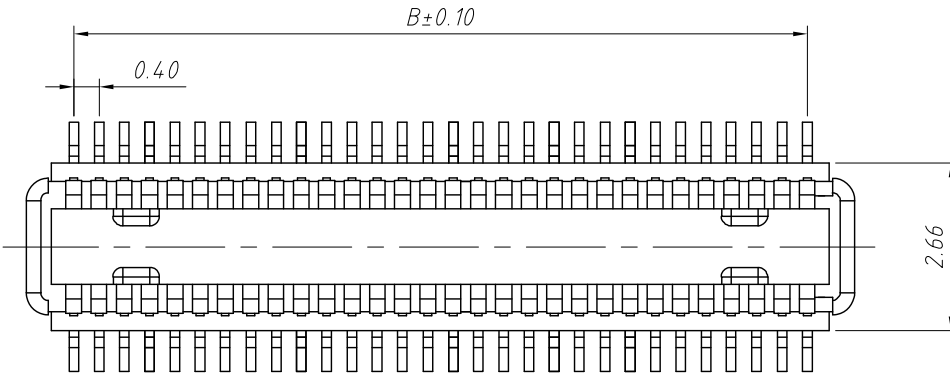


1 RoHS Compliance

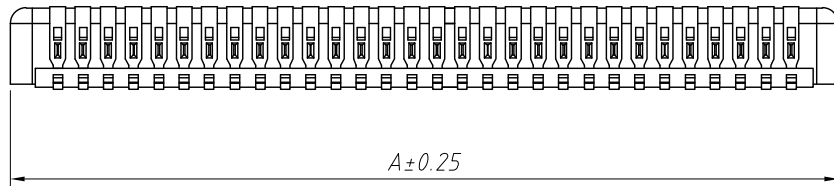


Material and Plated
 1.Housing:High Temp Plastic,(LCP UL94V-0) Black
 2.Contact:Copper Alloy
 3.Plated:Gold Plated (Nickel 50u" Min. Over all)
 4.Package :5000pcs/Reel

Specifications:
 1.Current Rating:0.3A AC/DC
 2.Voltage Rating:30V AC/DC
 3.Contact Resistance:100mΩ. max.
 4.Insulation Resistance:50MΩ. min.
 5.Withstanding Voltage:100V AC for one minute
 6.Operating Temperature Range:-35°C to +85°C

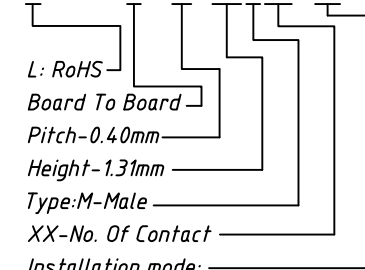
Mating Height Dimension

P/N Plug	P/N Socket	Mating Height
B0104-131M	B0104-148F	1.50



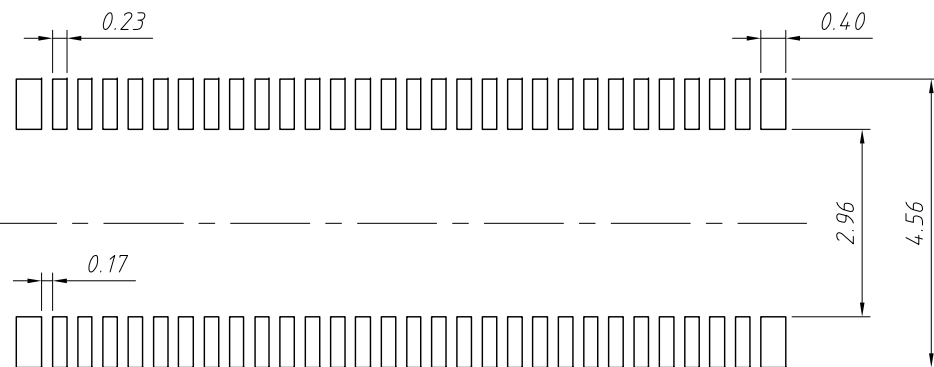
Order Information:

L-KLS1-B0104-131MXX-TR



Installation mode:
 T=SMD Without Post, T3=SMD With Post
 Packing:R=Reel T=Tube

Circuit	A	B
24	5.90	4.40
30	7.10	5.60
36	8.30	6.80
40	9.10	7.60
50	11.10	9.60
54	11.90	10.40
60	13.10	11.60
70	15.10	13.60



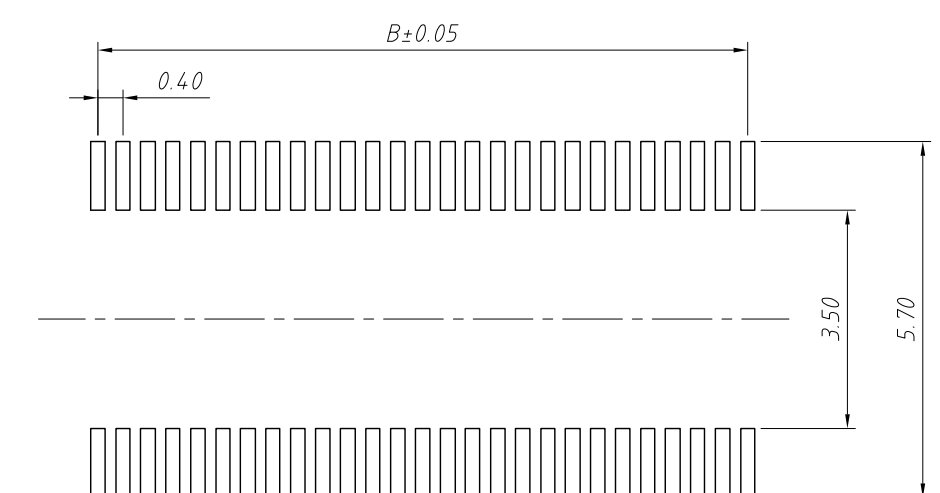
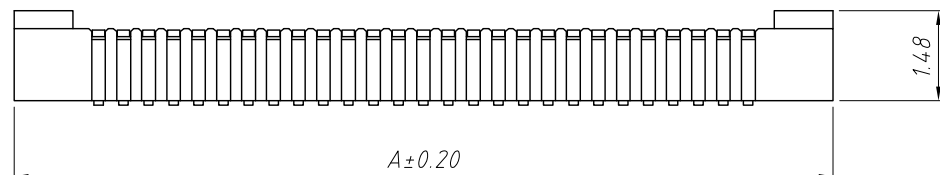
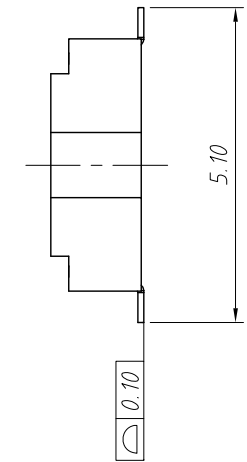
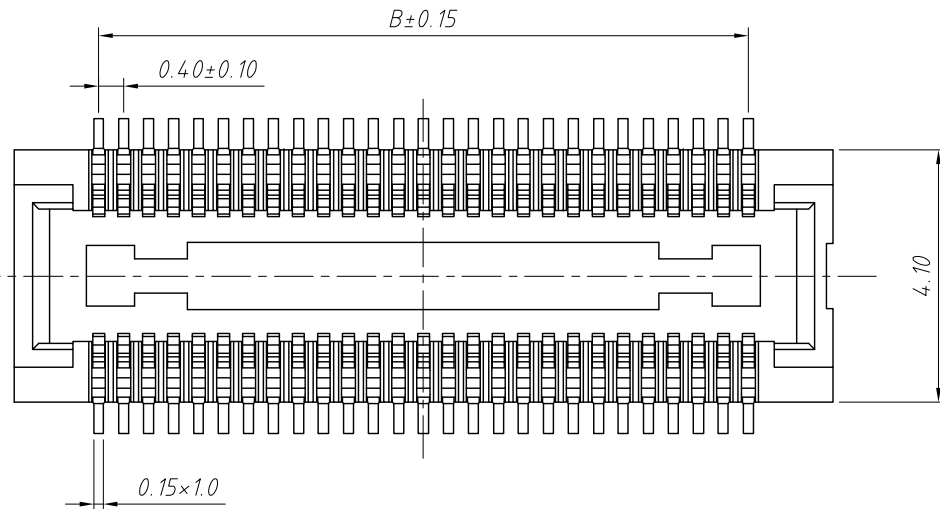
Recommended P.C.B Layout

ANGLE TOLERANCE	PROJECTION	Description:
±3°		0.4mm Board To Board Plug
GENERAL TOLERANCE	UNITS	mm
x.x ±0.30	SHEET SIZE	A4
x.xx ±0.20	Draw:	Daniel 2020-11-11
x.xxx ±0.10	Check:	Daniel 2020-11-11



NingBo KLS ELECTRONIC CO.,L TD.

RoHS Compliance



Recommended P.C.B Layout

Material and Plated
 1.Housing:High Temp Plastic,(LCP UL94V-0) Black
 2.Contact:Copper Alloy
 3.Plated:Gold Plated (Nickel 50u" Min. Over all)
 4.Package :5000pcs/Reel

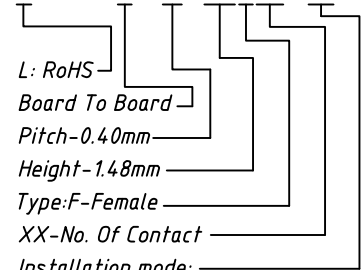
Specifications:
 1.Current Rating:0.3A AC/DC
 2.Voltage Rating:30V AC/DC
 3.Contact Resistance:100mΩ. max.
 4.Insulation Resistance:50MΩ. min.
 5.Withstanding Voltage:100V AC for one minute
 6.Operating Temperature Range:-35°C to +85°C

Mating Height Dimension

P/N Plug	P/N Socket	Matting Height
B0104-131M	B0104-148F	1.50

Order Information:

L-KLS1-B0104-148FXX-TR



L: RoHS
 Board To Board
 Pitch-0.40mm
 Height-1.48mm
 Type:F-Female
 XX-No. Of Contact
 Installation mode:
 T=SMD Without Post, T3=SMD With Post
 Packing:R=Reel T-Tube

Circuit	A	B
20	6.30	3.60
24	7.10	4.40
30	8.30	5.60
34	9.10	6.40
40	10.30	7.60
50	12.30	9.60
60	14.30	11.60
70	16.30	13.60

ANGLE TOLERANCE	PROJECTION	Description:
±3°		Pitch 0.4mm Board to Board Connector H1.50mm
GENERAL TOLERANCE	UNITS	mm
x.x ±0.30	SHEET SIZE	A4
x.xx ±0.20	Draw:	Daniel 2020-11-11
x.xxx ±0.10	Check:	Daniel 2020-11-11



NingBo KLS ELECTRONIC CO.,LTD.