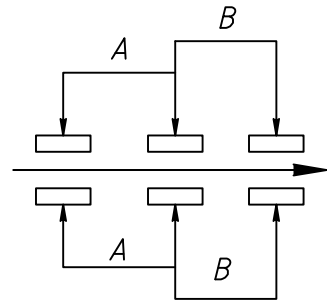
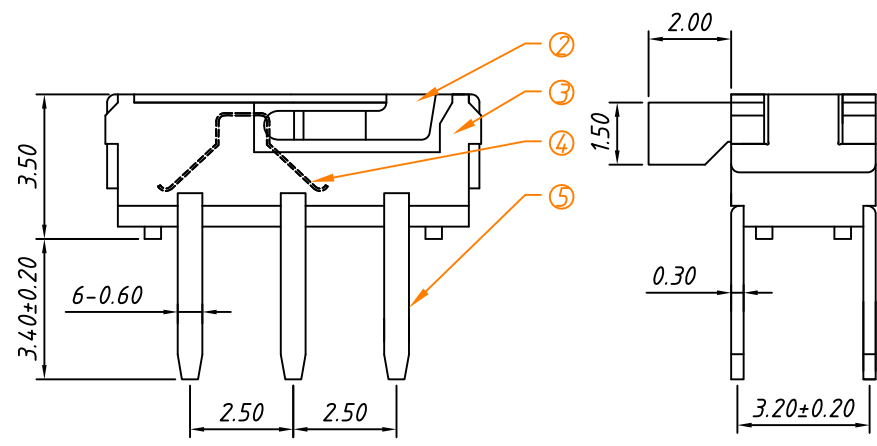
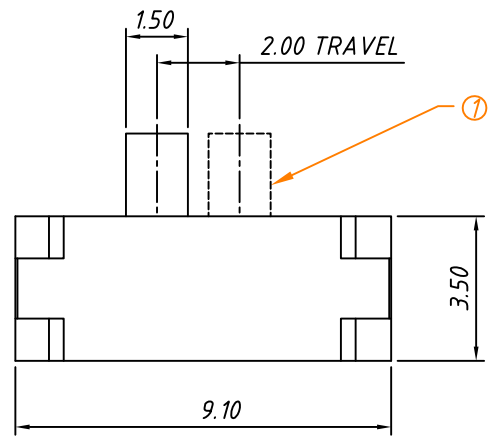
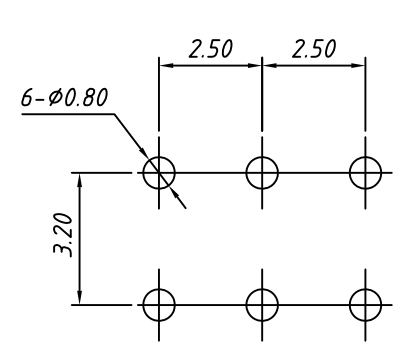


1  
RoHS Compliance



CIRCUIT



PCB LAYOUT

**ELECTRICAL**  
 Rating: 0.3A 6V DC  
 Function: 2P2T  
 Timing: Non-shorting  
 Contact Resistance: 70mΩ Max.  
 Insulation Resistance: 100MΩ Min. at 500V DC  
 Dielectric Strength: AC 500V for 1 min  
 Operating Temper: -20°C ~ +75°C  
 Operating Force: 250 ± 150gf  
 Life Test: 10000 Cycles

**Order Information:**  
 L-KLS7-MSS-2245 -X B  
 RoHS \_\_\_\_\_  
 DPDT \_\_\_\_\_  
 STEM Color: \_\_\_\_\_  
 B-Black  
 W-White  
 PACKING: B-BAG \_\_\_\_\_

| NO. | PARTS          | MATERIAL | FINISHING & COLOR | Q'TY |
|-----|----------------|----------|-------------------|------|
| 5   | TERMINAL A/B/C | C2680    | Ag PLATED         | 6    |
| 4   | CONTACT        | C5210    | Ag PLATED         | 2    |
| 3   | BOTTOM         | PA46     | Black             | 1    |
| 2   | COVER          | SUS      | Natural           | 1    |
| 1   | STEM           | PA66     | Black OR White    | 1    |

| GENERAL TOLERANCE | PROJECTION |            | Description:   |
|-------------------|------------|------------|--|
| X. ±0.20          | UNITS      | mm         | Mini Slide Switch, 9.0x3.5x3.5mm, DPDT<br>KLS P/N: L-KLS7-MSS-2245 |
|                   | SCALE      | 1:1        |  |
|                   | Draw by:   | Daniel     |  |
| ANGLE TOLERANCE   | Check by:  | Daniel     | NingBo KLS ELECTRONIC CO.,L TD.                                    |
| ±3°               | Date       | 2020-08-30 |  |
|                   | SHEET      | 1 OF 1     |  |