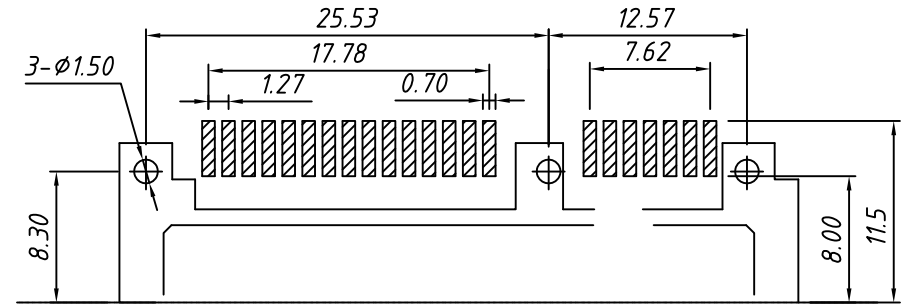
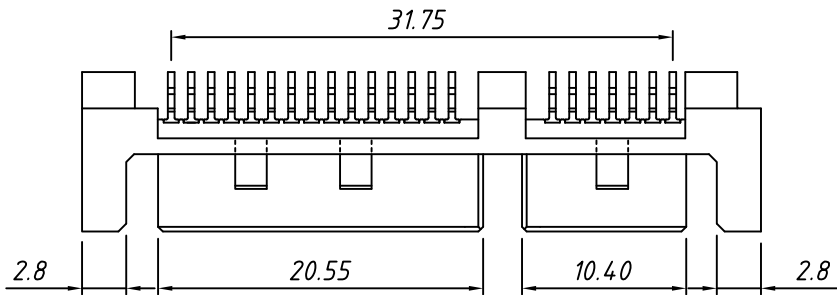
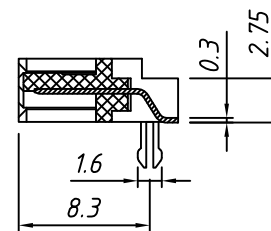
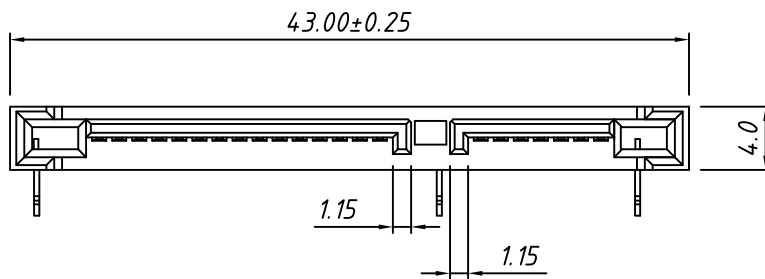


1 RoHS Compliance



Recommend PC Board Layout



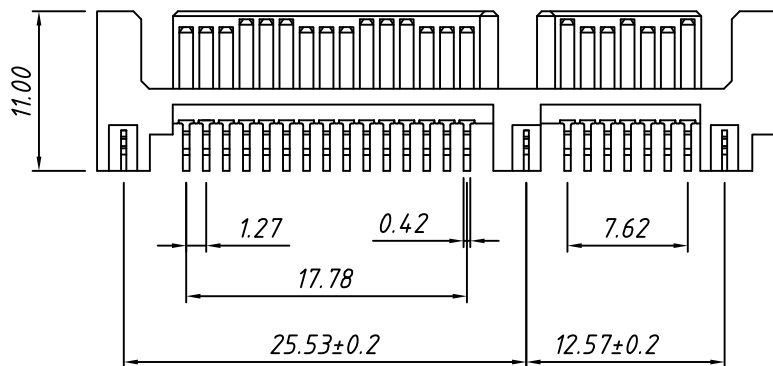
SECTION A-A

MATERIAL:

- Housing: LCP, UL 94-V0, Black
- Contact: Copper alloy, 50u" min. Nickel plating
- Overall: 100u" min. Tin on solder tail;
- Gold plating on contact area.
- Hook: Copper alloy, Nickel and Tin plating overall.

ELECTRICAL:

- Contact Resistance: 25 mΩ Max.
- Insulation Resistance: 1000 MΩ Min.
- Dielectric Withstanding Voltage: 500VRMS Min.



TOLERANCE	PROJECTION	UNITS	SHEET	Draw:	Date	Description:
.X ±0.30		mm	A4	Daniel	2018-03-01	SATA 7+15P Male Connector, SMD
.XX ±0.20						
.XXX ±0.10						KLS P/N: L-KLS1-SATA403
X. ±2°						NingBo KLS ELECTRONIC CO.,LTD.
.X ±1°						
.XX ±0.5°						