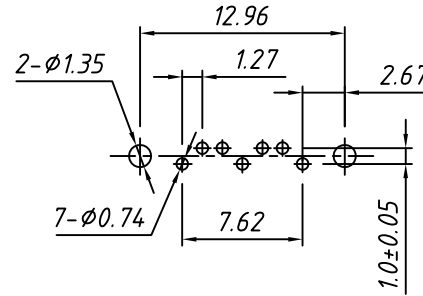
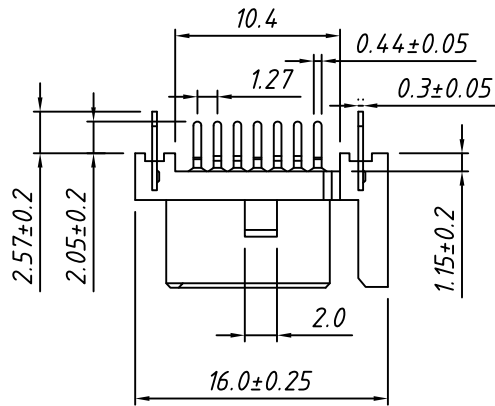


RoHS Compliance



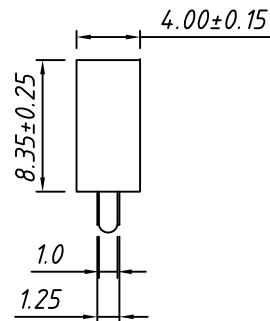
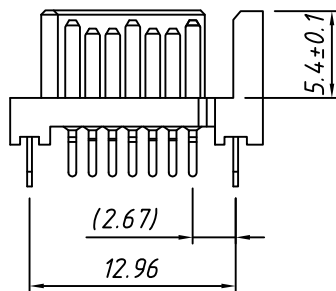
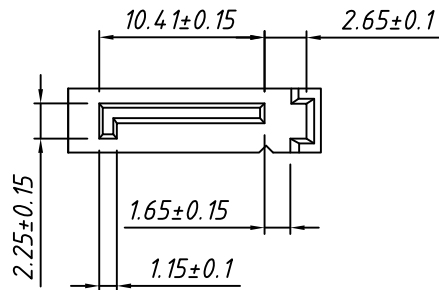
Recommend PC Board Layout  
(Top layer , Thickness:1.60mm)

**MATERIAL:**

Housing: Thermoplastic, UL 94-V0  
 Contact: Copper alloy, 50u" min. Nickel plating  
 Overall, 100u" min. Tin on solder tail;  
 Gold plating on contact area.  
 Hook: Copper alloy, Nickel and Tin plating overall.

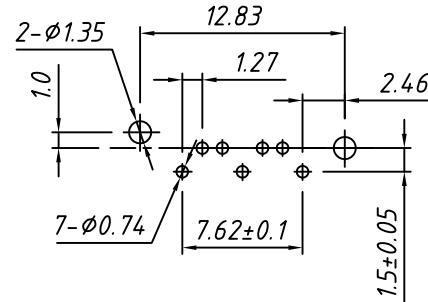
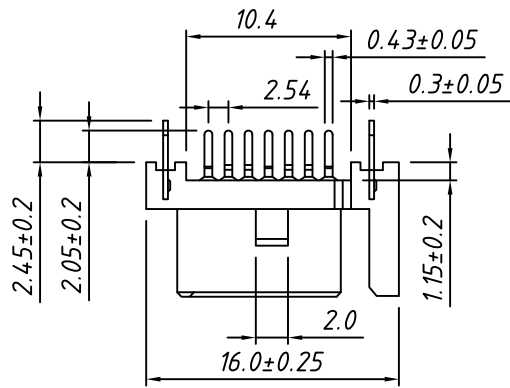
**ELECTRICAL:**

Contact Resistance: 25 mΩ Max.  
 Insulation Resistance: 1000 MΩ Min.  
 Dielectric Withstanding Voltage: 500VRMS Min.



TOLERANCE	PROJECTION	UNITS	SHEET	Draw:	Date	Description:
.X ±0.30		mm	A4	Daniel	2018-03-01	SATA Type A 7P Male Connector, Straight DIP, with Single Locator
.XX ±0.20				Daniel		
.XXX ±0.10						KLS P/N: L-KLS1-SATA005 A
X. ±2°						NingBo KLS ELECTRONIC CO.,LTD.
.X ±1°						
.XX ±0.5°						

1 RoHS Compliance



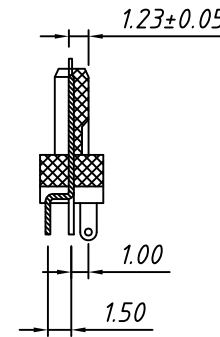
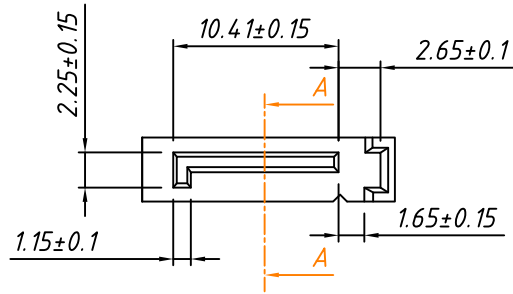
Recommend PC Board Layout  
(Top layer, Thickness: 1.60mm)

**MATERIAL:**

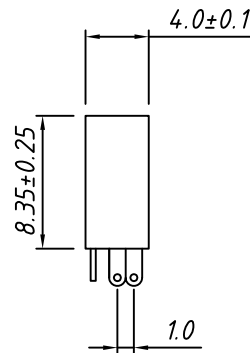
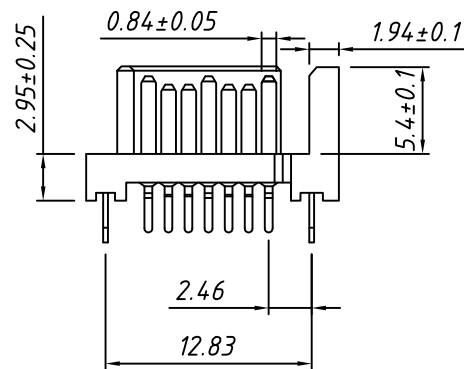
Housing: Thermoplastic, UL 94-V0  
 Contact: Copper alloy, 50u" min. Nickel plating  
 Overall, 100u" min. Tin on solder tail;  
 Gold plating on contact area.  
 Hook: Copper alloy, Nickel and Tin plating overall.

**ELECTRICAL:**

Contact Resistance: 25 mΩ Max.  
 Insulation Resistance: 1000 MΩ Min.  
 Dielectric Withstanding Voltage: 500VRMS Min.



SECTION A-A



TOLERANCE		Description:	SATA Type B 7P Male Connector, Straight DIP, with Single Locator
.X ±0.30	PROJECTION		
.XX ±0.20	UNITS	mm	
.XXX ±0.10	SHEET	A4	
X. ±2°	Draw:	Daniel	KLS P/N: L-KLS1-SATA005 B
.X ±1°	Check:	Daniel	NingBo KLS ELECTRONIC CO.,LTD.
.XX ±0.5°	Date	2018-03-01	