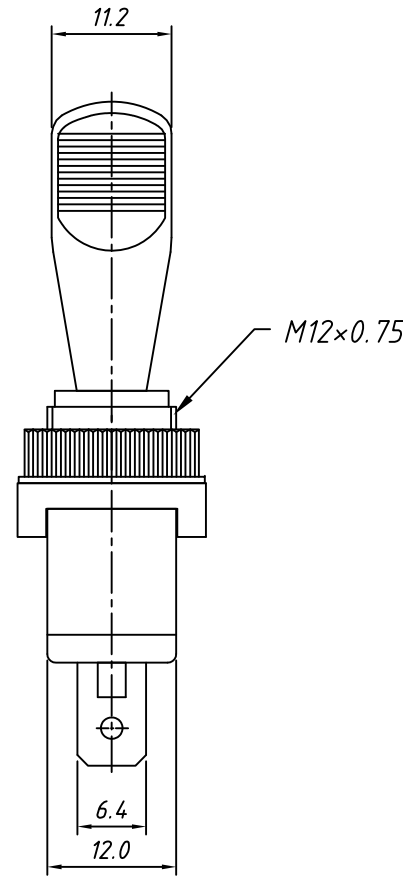
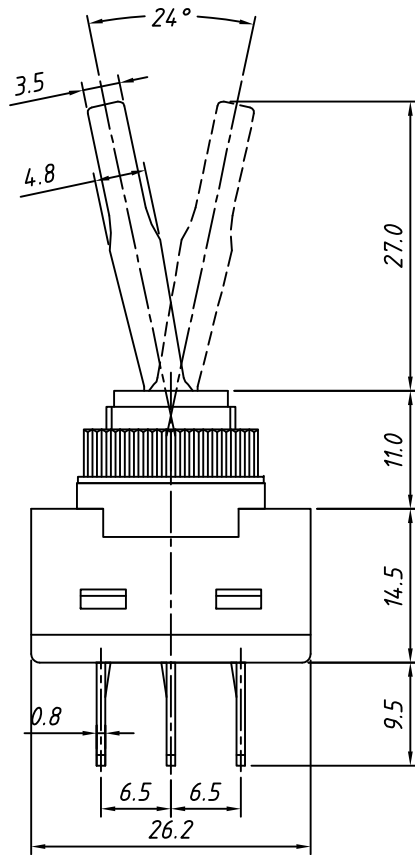
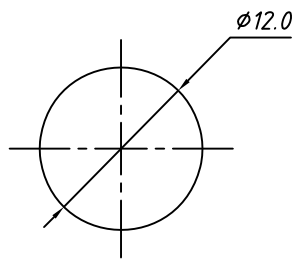
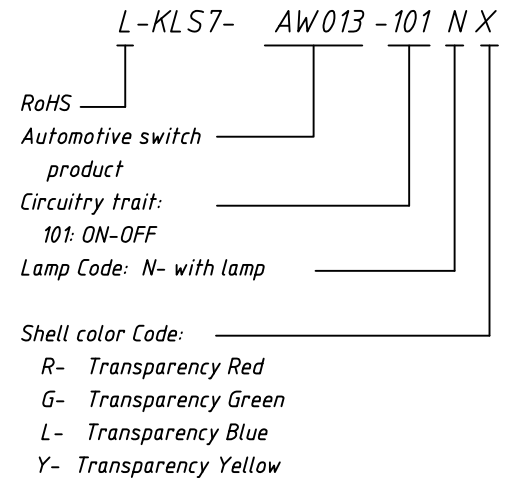


RoHS Compliant

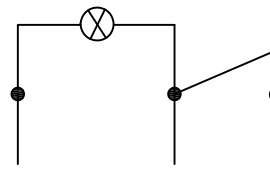


Electrical
 Rated voltage/current: 20A 12V DC
 Contact Resistance: 50 mΩ
 Insulation resistance: 100MΩ/DC500V
 Withstand voltage: AC1500V / 1 min
 Temp. Range: -25 °C ~ +85 °C
 Life: 10000 cycles

Order Information



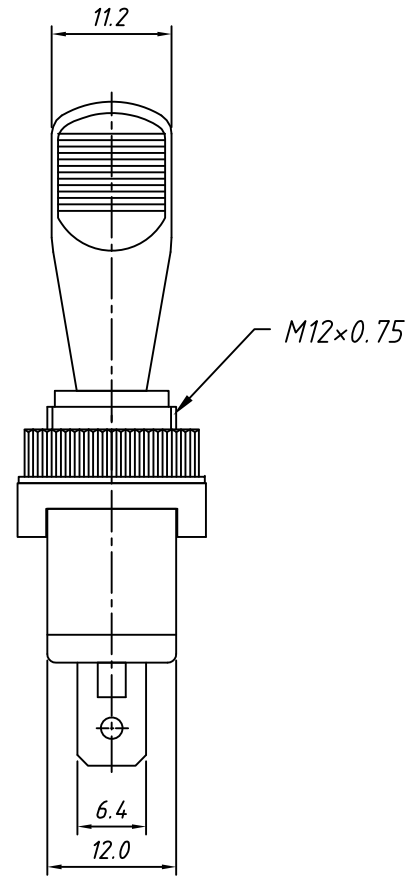
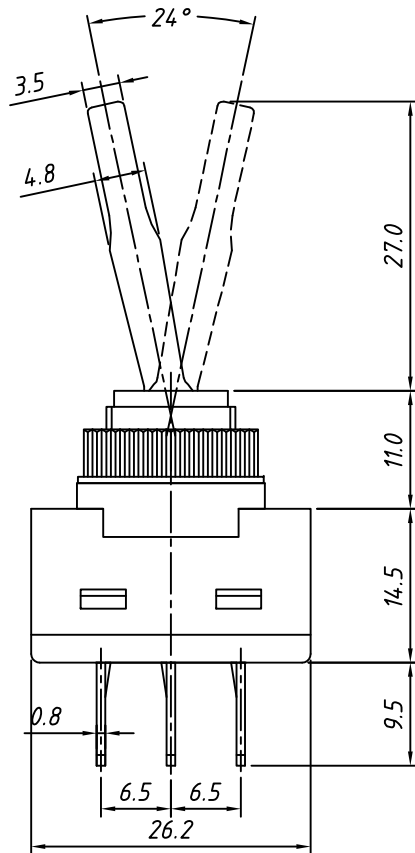
Panel Mounting



Circuitry

GENERAL TOLERANCE		ANGLE TOLERANCE		Description: Automotive Switch	
X. ±0.60		X. ±5°		SPST 3P, with Lamp, ON-OFF	
.X ±0.38		.X ±3°		KLS P/N: KLS7-AW013-101Nx	
.XX ±0.25		.XX ±2°		KLS	
Draw by 2015-09-01		PROJECTION		NingBo KLS ELECTRONIC CO.,L TD.	
Check by 2015-09-15		UNITS mm			
SCALE		SHEET SIZE A4			

RoHS Compliant



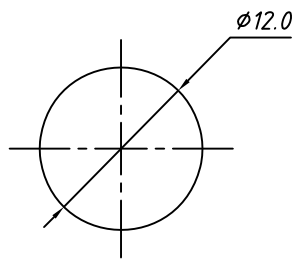
Electrical
 Rated voltage/current: 20A 12V DC
 Contact Resistance: 50 mΩ
 Insulation resistance: 100MΩ/DC500V
 Withstand voltage: AC1500V / 1min
 Temp. Range: -25 °C ~ +85 °C
 Life: 10000 cycles

Order Information

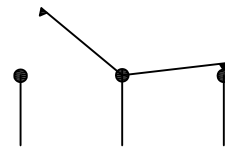
L-KLS7- AW013 -102 0 B

RoHS
 Automotive switch product
 Circuitry trait: 102: ON-ON
 Lamp Code: 0- without lamp

Shell color Code: B- Black



Panel Mounting

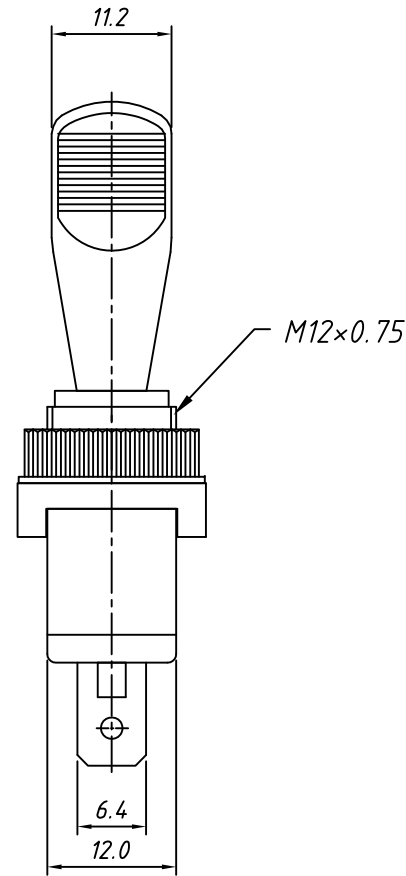
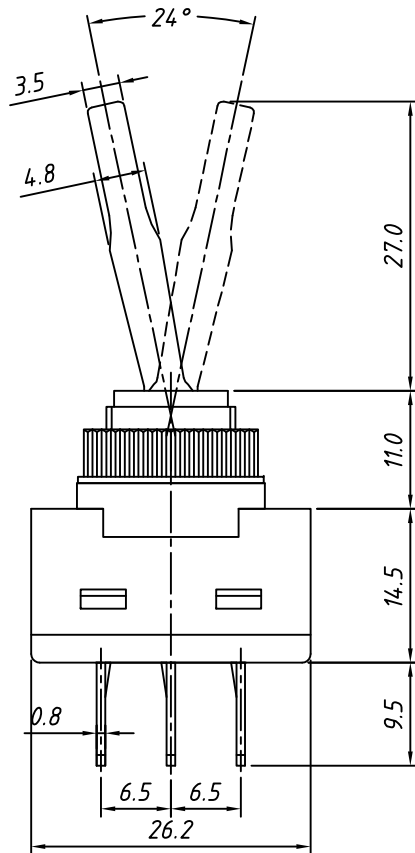


ON-ON

Circuitry

GENERAL TOLERANCE		ANGLE TOLERANCE		Description: Automotive Switch	
X. ±0.60		X. ±5°		SPST 3P, with Lamp, ON-ON	
.X ±0.38		.X ±3°		KLS P/N: KLS7-AW013-1020B	
.XX ±0.25		.XX ±2°		KLS	
Draw by 2015-09-01		PROJECTION		NingBo KLS ELECTRONIC CO.,L TD.	
Check by 2015-09-15		UNITS mm			
SCALE		SHEET SIZE A4			

RoHS Compliant



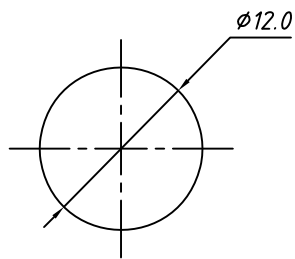
Electrical
 Rated voltage/current: 20A 12V DC
 Contact Resistance: 50 mΩ
 Insulation resistance: 100MΩ/DC500V
 Withstand voltage: AC1500V / 1 min
 Temp. Range: -25 °C ~ +85 °C
 Life: 10000 cycles

Order Information

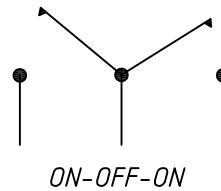
L-KLS7- AW013 -103 0 B

RoHS
 Automotive switch product
 Circuitry trait: 103: ON-OFF-ON
 Lamp Code: 0- without lamp

Shell color Code: B- Black



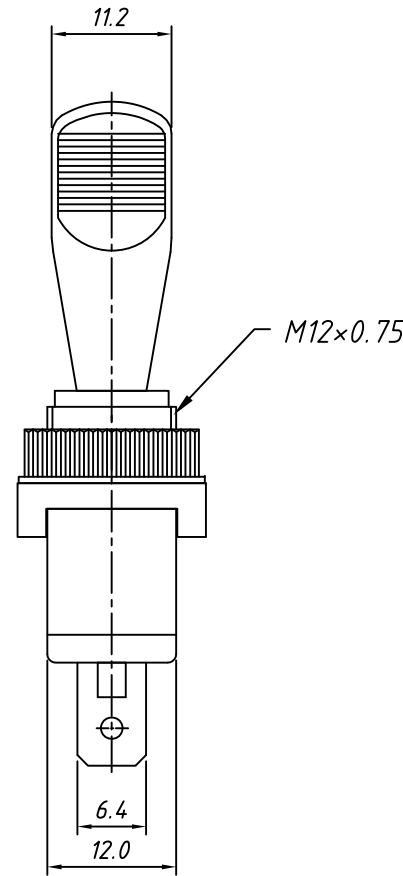
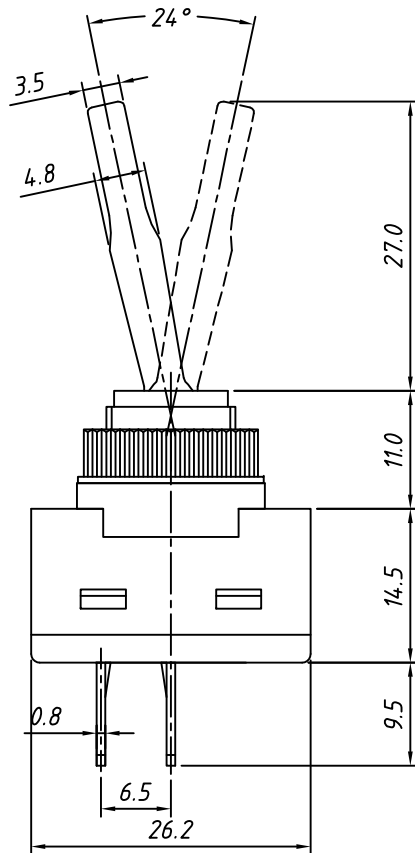
Panel Mounting



Circuitry

GENERAL TOLERANCE		ANGLE TOLERANCE		Description: Automotive Switch	
X. ±0.60		X. ±5°		SPST 3P, with Lamp, ON-OFF-ON	
.X ±0.38		.X ±3°		KLS P/N: KLS7-AW013-1030B	
.XX ±0.25		.XX ±2°		KLS	
Draw by	2015-09-01	PROJECTION		NingBo KLS ELECTRONIC CO.,L TD.	
Check by	2015-09-15	UNITS	mm		
SCALE		SHEET SIZE	A4		

RoHS Compliant

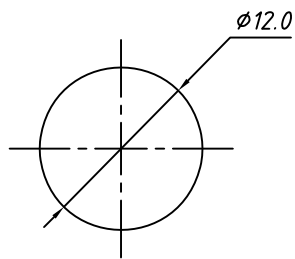


Electrical
 Rated voltage/current: 20A 12V DC
 Contact Resistance: 50 m Ω
 Insulation resistance: 100MΩ/DC500V
 Withstand voltage: AC1500V / 1min
 Temp. Range: -25 °C ~ +85 °C
 Life: 10000 cycles

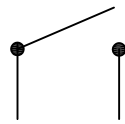
Order Information

L-KLS7- AW013 -101 0 B

RoHS —
 Automotive switch product —
 Circuitry trait: 101: ON-OFF —
 Lamp Code: 0- without lamp —
 Shell color Code: B- Black —



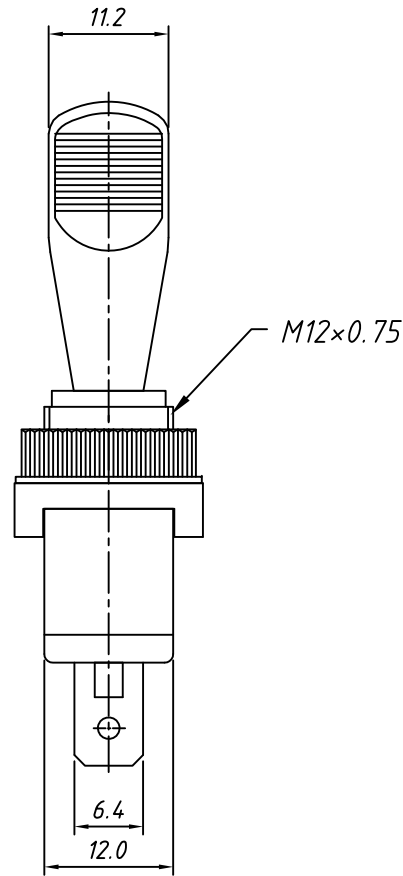
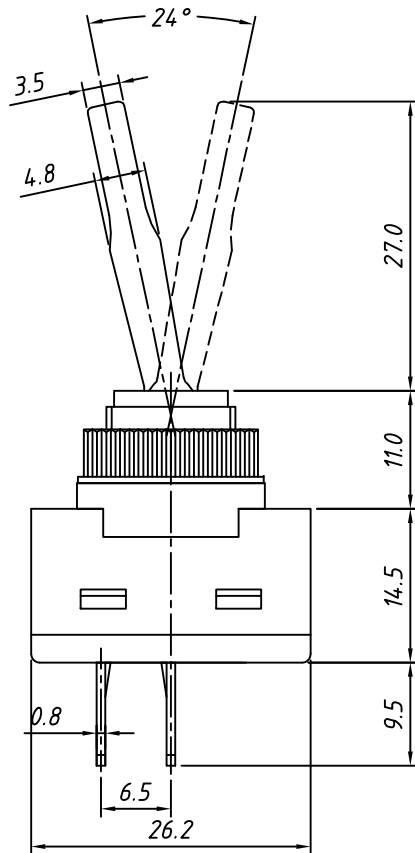
Panel Mounting



ON-OFF
Circuitry

GENERAL TOLERANCE		ANGLE TOLERANCE		Description: Automotive Switch	
X. ±0.60		X. ±5°		SPST 2P, without Lamp, ON-OFF	
.X ±0.38		.X ±3°		KLS P/N: KLS7-AW013-1010B	
.XX ±0.25		.XX ±2°		KLS	
Draw by	2015-09-01	PROJECTION		NingBo KLS ELECTRONIC CO.,L TD.	
Check by	2015-09-15	UNITS	mm		
SCALE		SHEET SIZE	A4		

RoHS Compliant



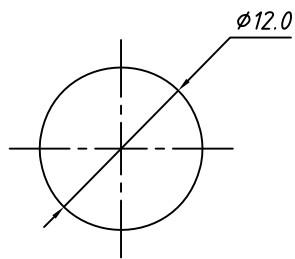
Electrical
 Rated voltage/current: 20A 12V DC
 Contact Resistance: 50 mΩ
 Insulation resistance: 100MΩ/DC500V
 Withstand voltage: AC1500V / 1min
 Temp. Range: -25 °C ~ +85 °C
 Life: 10000 cycles

Order Information

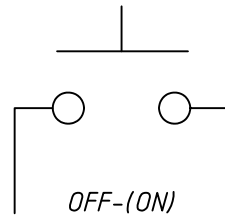
L-KLS7- AW013 - 111 0 B

RoHS
 Automotive switch product
 Circuitry trait: 111: OFF-(ON)
 Lamp Code: 0- without lamp

Shell color Code: B- Black



Panel Mounting



Circuitry

GENERAL TOLERANCE		ANGLE TOLERANCE		Description:	Automotive Switch
X. ±0.60		X. ±5°		SPST 2P, without Lamp, OFF-(ON)	
.X ±0.38		.X ±3°		KLS P/N:	KLS7-AW013-1110B
.XX ±0.25		.XX ±2°			NingBo KLS ELECTRONIC CO.,L TD.
Draw by 2015-09-01	PROJECTION				
Check by 2015-09-15	UNITS	mm			
SCALE		SHEET SIZE	A4		