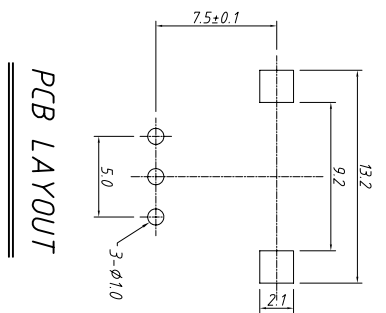


Shaft type							
L	15	17.5	20	25	30		
F	5	7	7	12	12		

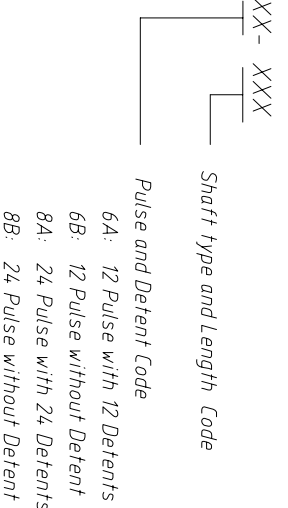


PCB LAYOUT

RoHS
12mm Encoder

Order Information:

L-KLS4-EK1201 - B XX-XXX



Electrical Characteristics

- Rated Power:** DC5V 5mA Max.
- Output signal:** A \ B 2signals
- Resolution:** 12 Pulses 360° / 24 Pulses 360°
- Phase difference:** 0.08T Min.
- Sliding noise:** 3mS Max.
- Contact Resistance:** 1 Ω Max.
- Insulation resistance:** 100MΩ Min. at DC 250V
- Withstand voltage:** AC300V / 1 min

Mechanical

- Total rotation angle:** 360°
- Rotational Torque:** 1kgf.cm Max
- Click Torque:** 20 ~150 gf.cm
- Push-pull Strength of Shaft:** 8.0kgf Min.
- Number of Detents:** 12 detents Step angle: 30°±2°
24 detents Step angle: 15°±2°
Without detents
- Rotational Life:** 30000±200 cycles per 100gf.cm Min.
- Temp. Range:** -30 ° C ~ + 85 ° C
- Soldering:** 250 ° C 5Sec. Max.

GENERAL TOLERANCE		ANGLE TOLERANCE		PROJECTION		Description:	
X	±0.50	X	±5°	UNITS	mm		
.X	±0.38	.X	±3°	SHEET SIZE	A4	12MM Encoder Plastic shaft	
.XX	±0.25	.XX	±2°	KLS P/N:		KLS4-EK1201-BXX-XXX	
Draw By: Date		2015-09-01					
Check By: Date		2015-09-15					
SCALE		SHEET		OF		KLS ELECTRONIC CO., LTD.	