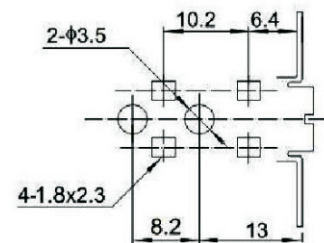
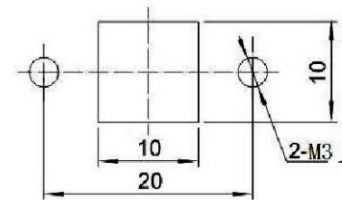
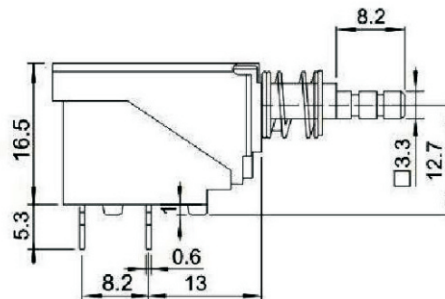
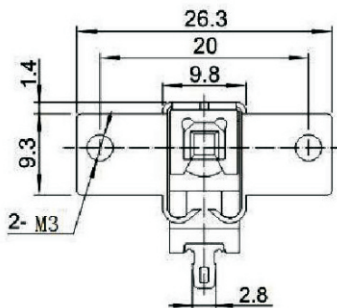


Push Switches

KLS7-PS-001C-L Push Switch

Specification of SW-3 Power Switch
Temperature: $-25\sim+85^{\circ}\text{C}$, $\leq 95\%$ (40°C)
Rated Load: 5A/40A/250V~
Contact Resistance: $\leq 0.03\Omega$
Insulation Resistance: $\geq 100\text{M}\Omega$
Withstand Voltage: AC1500V ,AC3000V
Actuating Force: 2~8N
Life: 10000



ORDER INFORMATION

KLS7-PS-001C-L

Part Number _____