

Trimmer potentiometers

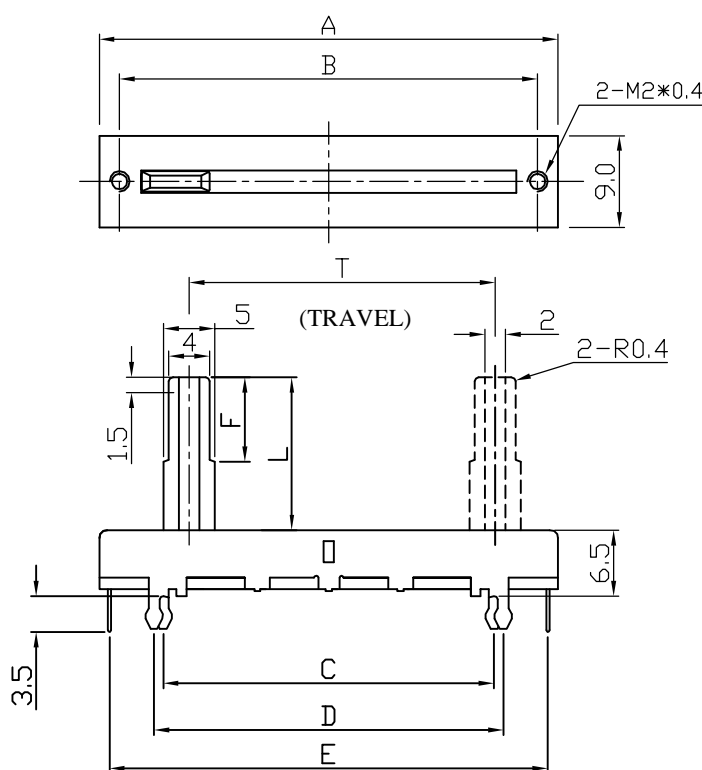
KLS4-SC4521N3 Travel 45mm Straight slide type potentiometer

TOLERANCES UNLESS OTHERWISE SPEC 未注公差允許範圍	
BASIC DIMENSIONS 適用範圍	TOLERANCES 允許公差
UP TO 10	± 0.3
ABOVE 10 TO 30	± 0.5
ABOVE 30 TO 100	± 1.0
ANGULAR DIMENSION	± 5°

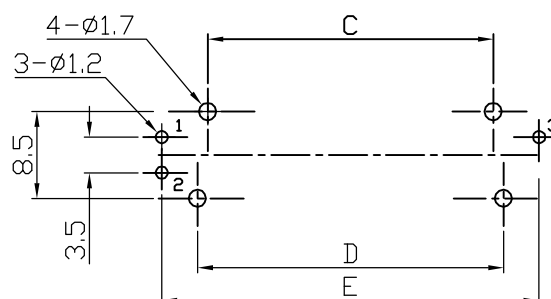
	■	□	□	□	□	□
X	1	2	3	5	6	7
L	10	12.5	15	18	20	0
F	5	5	5	5	5	5

MODEL NO.	T	A	B	C	D	E
<input type="checkbox"/> C1521N	15	30	26	17.8	20.2	28.5
<input type="checkbox"/> C2021N	20	35	31	22.8	25.2	33.5
<input type="checkbox"/> C3021N	30	45	41	32.8	35.2	43.5
<input type="checkbox"/> C4521N	45	60	56	47.8	50.2	58.5
<input type="checkbox"/> C6021N	60	75	71	62.8	65.2	73.5
<input type="checkbox"/> C0021N	100	117	112.5	104.6	107	115.2

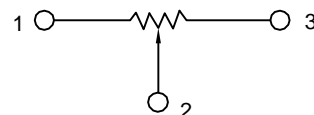
外形圖
Mechanical Dimensions



安裝孔位置圖
Mounting Hole



接線圖
Circuit Explanation



ORDER INFORMATION

Product No.: L-KLS4-SC4521N3-B470K-10C

