



GS3MB

Product Information

Package:SMB

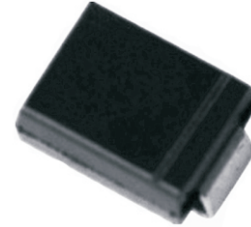
Max.Reverse Volatge:1000 VRRM(V)

Max.Aver.Rent.Current:3 Io(A)

Peak Fwd.Surge Current:100 IFSM(A)

Peak Forward Voltage:1.15 VF(V)

Peak Reverse Current @25°C:10 IR(uA)



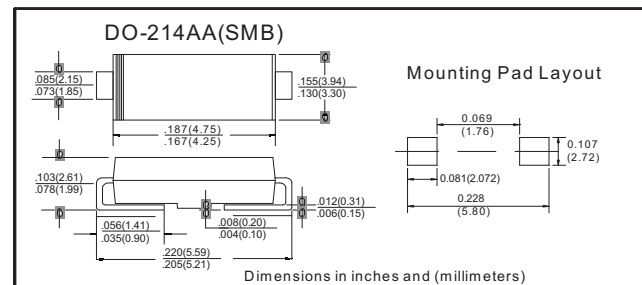
■特征 Features

- I_o 3.0A
- V_{RRM} 50V-1000V
- 耐正向浪涌电流能力高
High surge current capability
- 封装: 模压塑料
Cases: Molded plastic

■用途 Applications

- 整流用 Rectifier

■外形尺寸和印记 Outline Dimensions and Mark



■极限值 (绝对最大额定值)

Limiting Values (Absolute Maximum Rating)

| 参数名称 Item | 符号 Symbol | 单位 Unit | 测试条件 Test Conditions | GS3 | | | | | | |
|---|--------------|------------------|--|------------|-----|-----|-----|-----|-----|------|
| | | | | AB | BB | DB | GB | JB | KB | MB |
| 反向重复峰值电压 Repetitive Peak Reverse Voltage | V_{RRM} | V | | 50 | 100 | 200 | 400 | 600 | 800 | 1000 |
| 正向平均电流 Average Forward Current | $I_{F(AV)}$ | A | 正弦半波 60Hz, 电阻负载, $T_L=110^\circ\text{C}$ 60HZ Half-sine wave, Resistance load, $T_L=110^\circ\text{C}$ | 3 | | | | | | |
| 正向(不重复)浪涌电流 Surge(Non-repetitive)Forward Current | I_{FSM} | A | 正弦半波 60Hz, 一个周期, $T_a=25^\circ\text{C}$ 60Hz Half-sine wave ,1 cycle , $T_a=25^\circ\text{C}$ | 100 | | | | | | |
| 结温 Junction Temperature | T_J | $^\circ\text{C}$ | | -55~+150 | | | | | | |
| 储存温度 Storage Temperature | T_{STG} | $^\circ\text{C}$ | | -55 ~ +150 | | | | | | |

■电特性 (Ta=25°C 除非另有规定)

Electrical Characteristics (Ta=25°C Unless otherwise specified)

| 参数名称 Item | 符号 Symbol | 单位 Unit | 测试条件 Test Condition | GS3 | | | | | | |
|---------------------------------------|------------------|--------------------|---|-------------------------|----|----|----|----|----|----|
| | | | | AB | BB | DB | GB | JB | KB | MB |
| 正向峰值电压 Peak Forward Voltage | V_F | V | $I_F=2.5A$ | 1.15 | | | | | | |
| 反向漏电流 Peak Reverse Current | I_{RRM1} | μA | $V_{RM}=V_{RRM}$ | $T_a=25^\circ\text{C}$ | | | | | | |
| | I_{RRM2} | | | $T_a=125^\circ\text{C}$ | | | | | | |
| 热阻(典型) Thermal Resistance(Typical) | $R_{\theta J-L}$ | $^\circ\text{C/W}$ | 结和终端之间 Between junction and terminal | 10 ¹⁾ | | | | | | |

备注: Notes:

¹⁾ 热阻从结到环境及从结到引线, 在电路板的0.2" x 0.2" (5.0毫米 x 5.0毫米)铜垫片区

Thermal resistance from junction to ambient and from junction to lead mounted on P.C.B. with 0.2" x 0.2" (5.0 mm x 5.0 mm) copper pad areas

GS3MB

■ 特性曲线 (典型) Characteristics(Typical)



图1: 正向电流降额曲线
FIG.1: FORWARD CURRENT DERATING CURVE

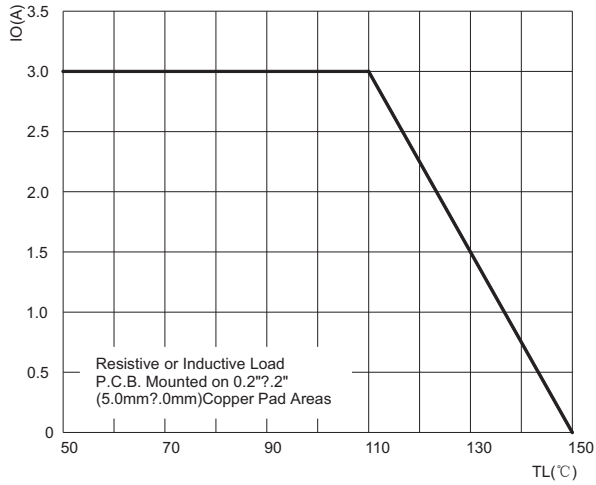


图2: 最大正向浪涌冲击耐受力
FIG.2: MAXIMUM NON-REPETITIVE FORWARD URGE CURRENT

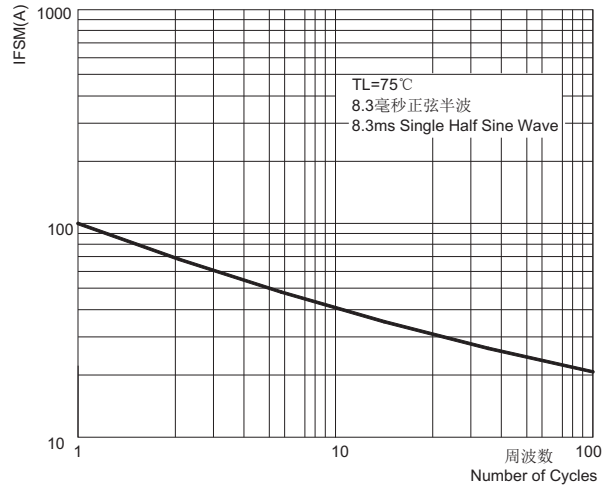


图3: 典型正向特性曲线
FIG.3: TYPICAL FORWARD CHARACTERISTICS

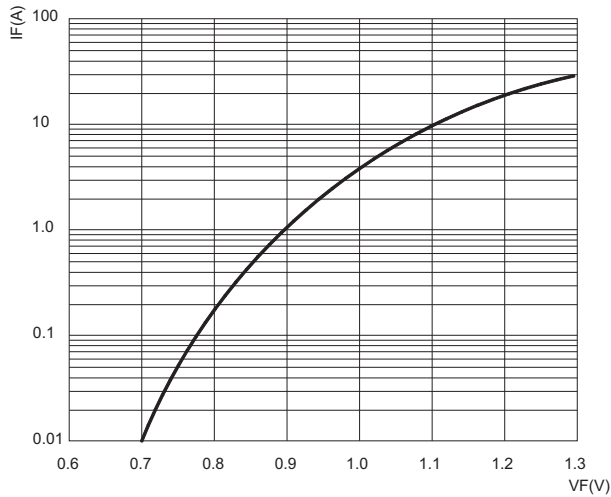


图4: 典型反向特性曲线
FIG.4: TYPICAL REVERSE CHARACTERISTICS

