

D-SUB Series

KLS1-226 D-sub,Machined Pin,Solder Type Straight

Technical parameters:

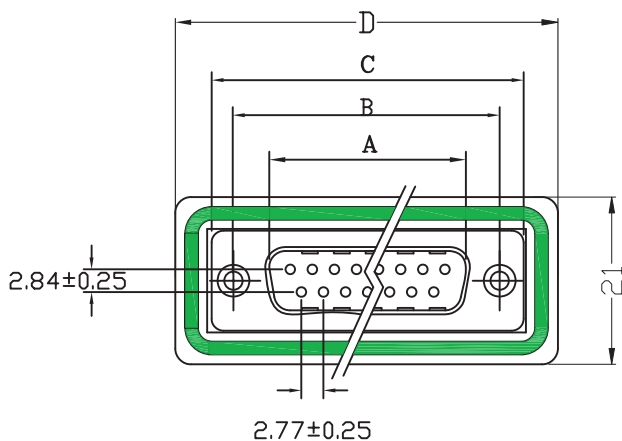
- 1.Contact Current Rating:5 AMPS
- 2.Contact Resistance:30 Milliohms MAX.
- 3.Dielectric Withstanding Voltage: 1000 V AC MIN.
- 4.Insulation Resistance:5000 Megaohms MIN.
- 5.Temperature Rating: -55°C +105°C.

Material:

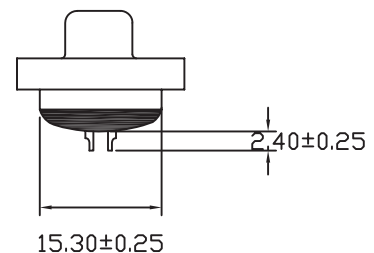
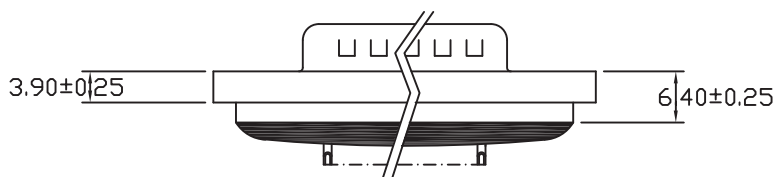
- 1.Insuiator:PBT Thermoplastic,+30 %Glass Fiber UL94V-0 Rated
- 2.Contact:Brass
- 3.Contact Finish:Full Gold Finished With #4-40 Threaded Rivets
- 4.Shell:Steel Material,Front Nickel Finished Back Shell Tin Finished



I

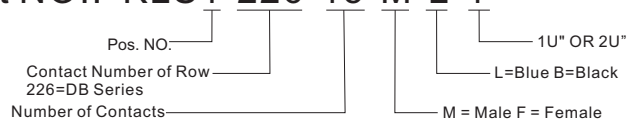


No. of Contacts	A ± 0.25	B ± 0.13	C ± 0.38	D ± 0.25
09	16.92	24.99	30.81	39.6
15	25.25	33.32	39.14	48
25	38.96	47.04	53.04	61.6
37	55.42	63.5	69.32	78



ORDER INFORMATION

Product NO.: KLS1-226-15-M-L-1



D-SUB Series

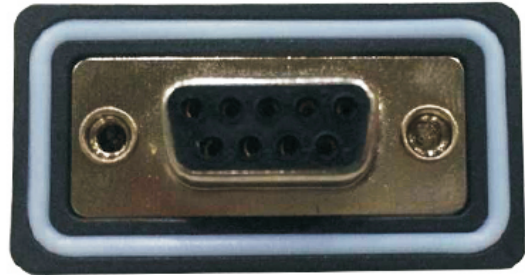
KLS1-226 D-sub, Machined Pin, Solder Type Straight

Technical parameters:

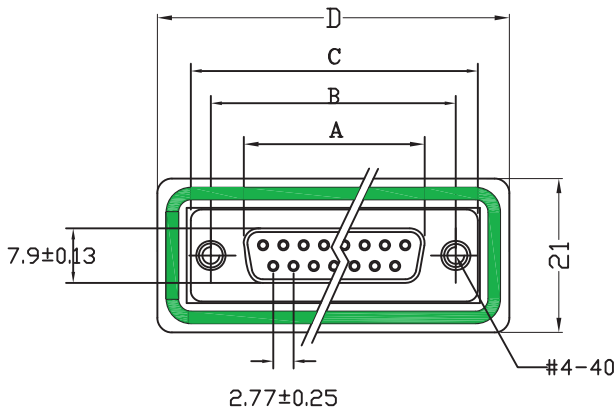
1. Contact Current Rating: 5 AMPS
2. Contact Resistance: 30 Milliohms MAX.
3. Dielectric Withstanding Voltage: 1000 V AC MIN.
4. Insulation Resistance: 5000 Megaohms MIN.
5. Temperature Rating: -55°C +105°C.

Material:

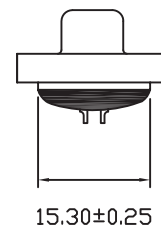
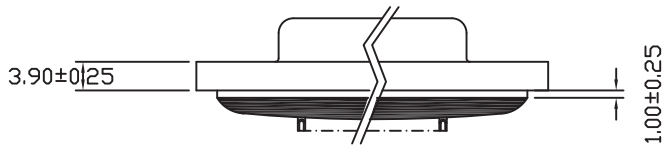
1. Insulator: PBT Thermoplastic, +30 % Glass Fiber UL94V-0 Rated
2. Contact: Brass
3. Contact Finish: Full Gold Finished With #4-40 Threaded Rivets
4. Shell: Steel Material, Front Nickel Finished Back Shell Tin Finished



I



No. of Contacts	A ± 0.25	B ± 0.13	C ± 0.38	D ± 0.25
09	16.33	24.99	30.81	39.6
15	24.66	33.32	39.14	48
25	38.38	47.07	53.04	61.6
37	54.84	63.5	69.32	78



ORDER INFORMATION

Product NO.: KLS1-226-15-F-B-1

